

Signature  
signaturefloors

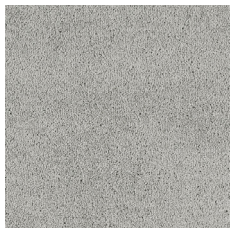
# Dakala

BREASE COLLECTION



DION 002

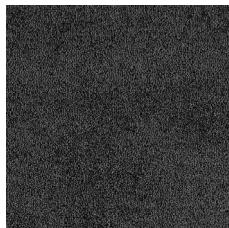




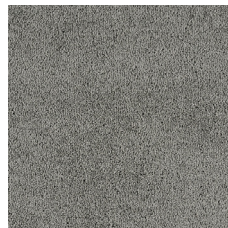
Malone 001



Dion 002



Roka 003



Tynes 004



Cosio 005



Belaski 006



Pepina 007



Gillion 008



Mernard 009



Carmo 010



Fontaine 011



Londino 012

## Technical specifications

<b>Fibre</b>	100% Resistain® Solution Dyed Nylon
<b>Warranty</b>	15 Year
<b>Rating</b>	Residential Extra Heavy Duty - 6 Stars Including Stairs
<b>Pile Weight</b>	55oz / 1865g/m <sup>2</sup> (+/- 5%)
<b>Construction</b>	Cut pile
<b>Width</b>	3.66m
<b>Pile height</b>	12mm (+/- 5%)
<b>Gauge</b>	1/8
<b>Backing</b>	Woven synthetic (Easybac)
<b>ACCS Number</b>	23302



ACTIVE CARE®



The floor you've been searching for



0800 150 555  
signaturefloors.co.nz

**Terms & Conditions:** Due to dye lot variations, actual material may vary from sample. Subfloor and all other preparations are to be in accordance with Australian Standards AS/NZS 2455.1.2007 "Textile Floor Covering Installation Practice". Carpets should always be installed with new, quality underlay. Underlay and carpet are designed to work together as a complete flooring system and underlay should always be used. Quality underlay will provide better comfort and resilience while extending the life of your carpet. Ask our retailer to match a quality underlay (compliant with the appropriate classification for the intended use/application as per AS:4288-2003 i.e. light residential, general, luxury, commercial, or heavy commercial) with the quality and proposed use of your carpet. For conventional installation heavy duty underlay is recommended. Signature Floors does not recommend the use of Hair Felt Underlay's. Seam Sealer must be used on all seams and cross joins. Chair mats are mandatory. Professional cleaning is recommended. Construction of this carpet may involve the occurrence of shift lines across the width of the carpet. Certain light sources shining across the carpet surface may emphasise these lines by forming shadow lines. This effect is not a manufacturing defect and will not detract from the carpet's performance.

Our goods come with guarantees that cannot be excluded under the Australian Consumer Law/ NZ Consumer Guarantees Act 1993. You are entitled to a replacement or refund for a major failure and compensation for any goods reasonably foreseeable loss or damage. You are also entitled to have the goods repaired or replaced if the goods fail to be of acceptable quality and the failure does not amount to a major failure. The benefits under our warranty are in addition to other rights and remedies available to the consumer under the law in relation to the goods and services which the warranty relates.

Signature Floors reserves the right to modify specifications subject to manufacturing variances. Manufacturing processes may necessitate specification changes without prior notice and without prejudice.

Please refer to our warranties on: [www.signaturefloors.co.nz](http://www.signaturefloors.co.nz) 06/2025©