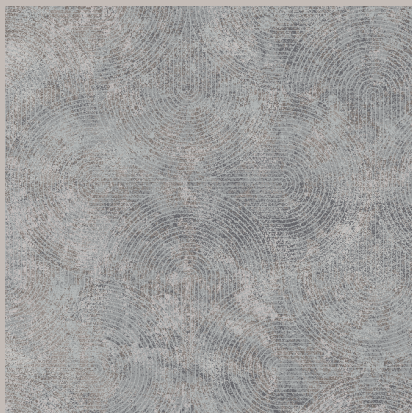




AXI  
AXMINSTER READY-TO-WEAR  
RTW

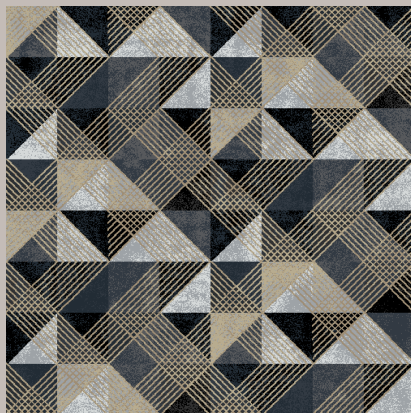
Signature





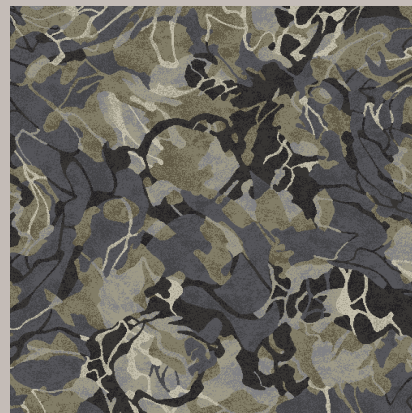
## Palais 473

Design Width: 366cm  
Design Length: 365.7cm  
Pattern Repeat: Set Match



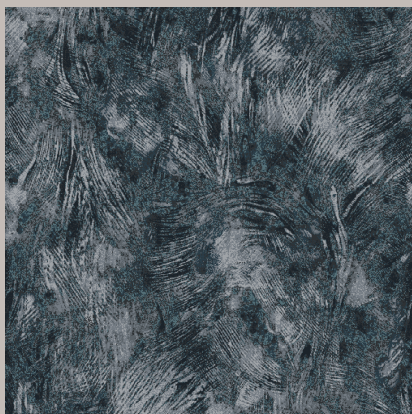
## Interlace 462

Design Width: 182.8cm  
Design Length: 182.8cm  
Pattern Repeat: Set Match



## Momento 443

Design Width: 182.8cm  
Design Length: 250.1cm  
Pattern Repeat: Set Match



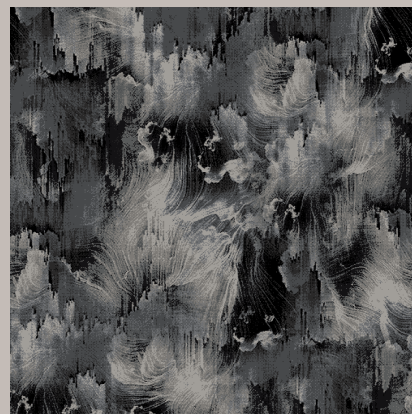
## Etch 417

Design Width: 182.8cm  
Design Length: 220.9cm  
Pattern Repeat: Set Match



## Dapple 459

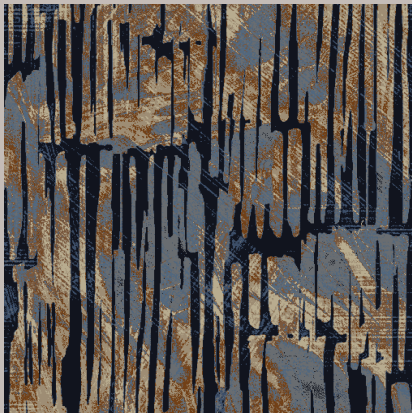
Design Width: 182.8cm  
Design Length: 183.5cm  
Pattern Repeat: Set Match



## Monsoon 486

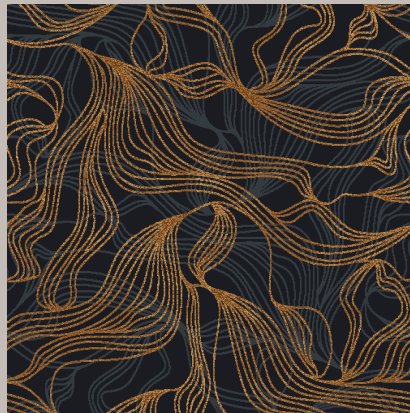
Design Width: 182.8cm  
Design Length: 205.7cm  
Pattern Repeat: Set Match





## Meta 420

Design Width: 182.8cm  
Design Length: 274.3cm  
Pattern Repeat: Set Match



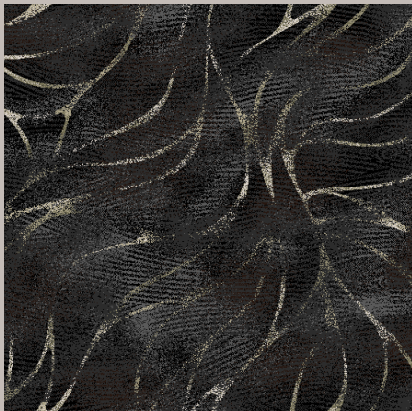
## Trace 494

Design Width: 182.8cm  
Design Length: 202.5cm  
Pattern Repeat: Set Match



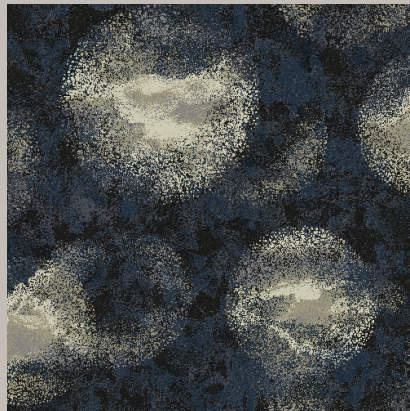
## Keppel 890

Design Width: 182.8cm  
Design Length: 160.0cm  
Pattern Repeat: Set Match



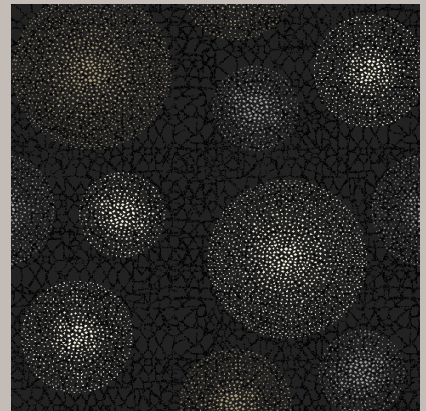
## Twill 994

Design Width: 182.8cm  
Design Length: 161.9cm  
Pattern Repeat: Set Match



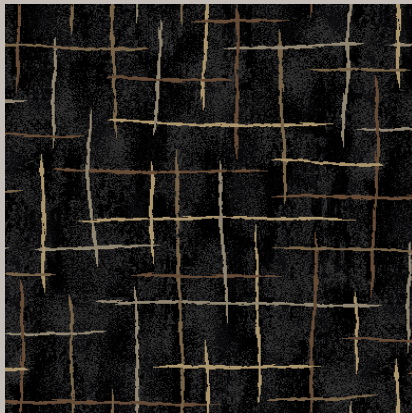
## Halo 188

Design Width: 182.8cm  
Design Length: 182.8cm  
Pattern Repeat: Set Match



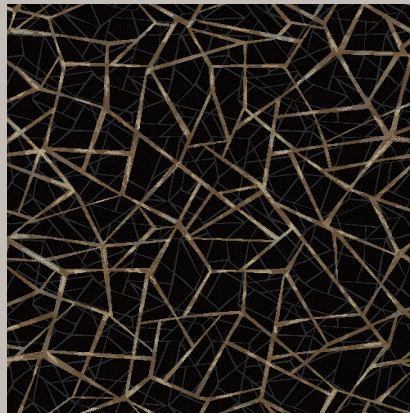
## Nova 655

Design Width: 182.8cm  
Design Length: 179.7cm  
Pattern Repeat: Set Match



## Axis 774

Design Width: 182.8cm  
Design Length: 140.3cm  
Pattern Repeat: Set Match



## Atomic 616

Design Width: 182.8cm  
Design Length: 180.9cm  
Pattern Repeat: Set Match



## Kilt 238

Design Width: 182.8cm  
Design Length: 45.7cm  
Pattern Repeat: Set Match



## Sultan 241

Design Width: 182.8cm  
Design Length: 91.4cm  
Pattern Repeat: Set Match

Carpet weight: 40oz  
Carpet width: 366cm  
Pitch/Beatup: 7x8  
Pile Height: 8mm  
Yarn type: 80% wool 20% nylon 6.6  
Yarn construction: 2ply, 740 Tex  
Backing: Polypropylene

All edges to be cut & seam sealed prior to installation.



Cut pile carpets, particularly 'plush pile' will in some circumstances exhibit the condition known as 'shading, watermarking or pile reversal'. A cut pile carpet that has 'shaded' will show areas lighter or darker than the surrounding carpet pile. The variation is caused by the reflection of light from pile tufts which come to lay in different directions. It does not affect the wear or durability of the carpet and since it is beyond the control of the manufacturer, it is not recognised as a manufacturing flaw or fault.

**Terms & Conditions:** Specifications are subject to manufacturing tolerances and may be changed without prior notice. Dye lots may vary in colour from sample and between production lots. All product purchases are subject to Signature Floorcoverings Standard Terms & Conditions of Sale. This product is to be installed by an experienced installer. Please refer to our Technical Information Manual, Maintenance Guide and Warranty Guide for further clarification.

**Disclaimer:** This brochure is presented for informational purposes only. Every effort is made to ensure that product images are of an accurate representation of the product. However, they are for illustrative purposes only and colour variations may occur in actual product and between dye series. Please consult your commercial sales consultant for further information.





Australia  
1800 150 554  
[signaturefloors.com.au](http://signaturefloors.com.au)

New Zealand  
0800 150 555  
[signaturefloors.co.nz](http://signaturefloors.co.nz)