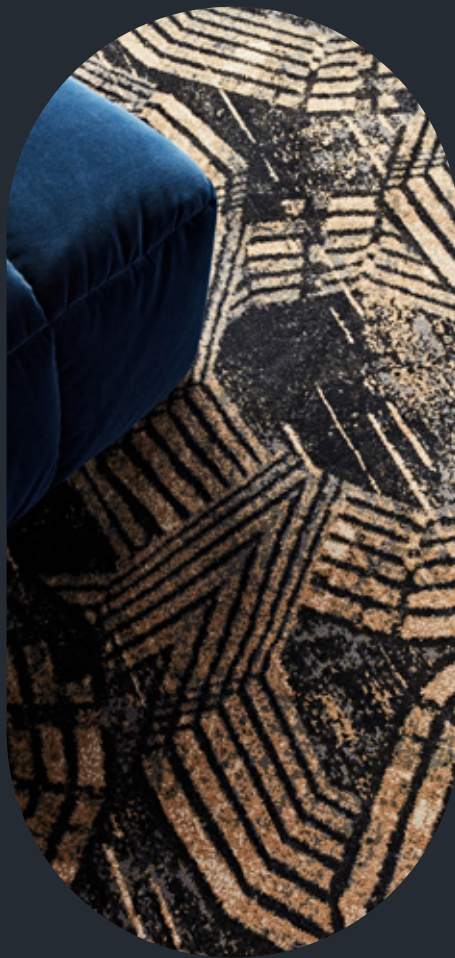


RTW
READY-TO-WEAR
ENCORE



Signature

Step into the spotlight with **RTW Encore**, a refined Axminster collection crafted for high-performance hospitality and commercial interiors. Balancing form and function, offering richly detailed patterns, a sophisticated palette, and the lasting resilience of a premium wool blend. Whether you're designing for grand lobbies, guest suites or high-traffic corridors, **RTW Encore** is stocked and delivers on both visual impact and practical demands. With indent colour options, it's a collection that invites commercial spaces to take the stage again and again.

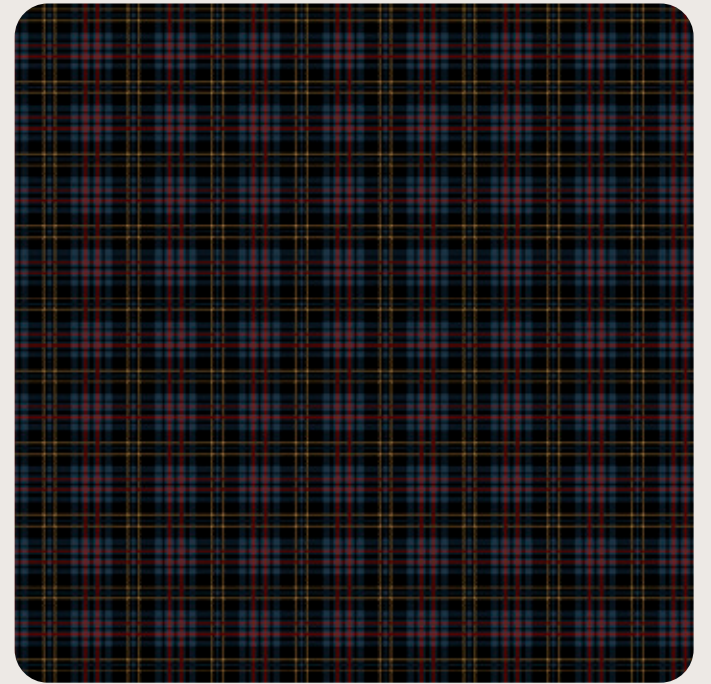


LOCH 552

Design Width:
30.5cm Set

Design Length:
30.5cm

IN STOCK



INDENT



CM-WN-2511-0104



CM-WN-2511-0106



CM-WN-2511-0108



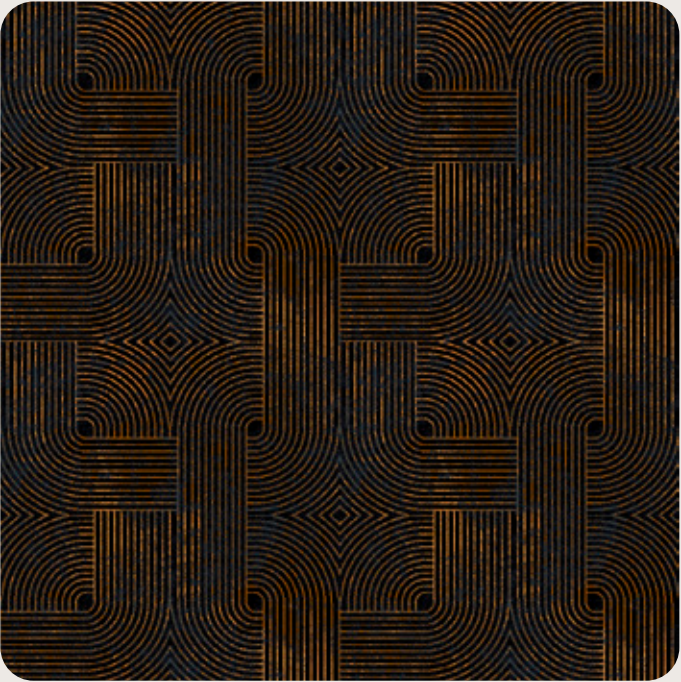
CM-WN-2511-0109

METROPOLIS 589

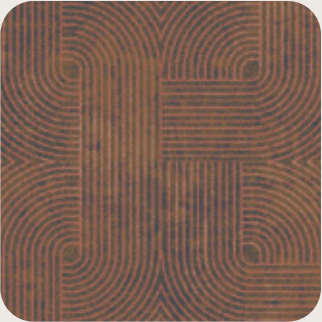
Design Width:
183cm Set

Design Length:
187cm

IN STOCK



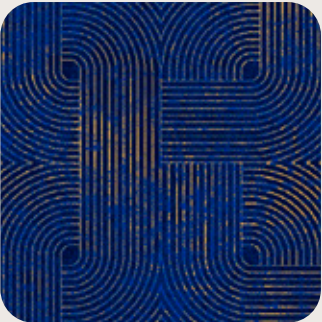
INDENT



CM-WN-2502-0087



CM-WN-2502-0088



CM-WN-2502-0089



CM-WN-2502-0090



In luxury resorts or serviced apartments where acoustics play a key role in shaping the stay quality, **LEVU** is like a warm embrace with its dense woven construction helping to absorb noise, minimise sound transfer between rooms and soften in-room acoustics for a more peaceful and private atmosphere.

LEVU 526

Design Width:
183cm Set

Design Length:
186cm

IN STOCK



INDENT



CM-WN-2502-0015



CM-WN-2502-0016



CM-WN-2502-0102



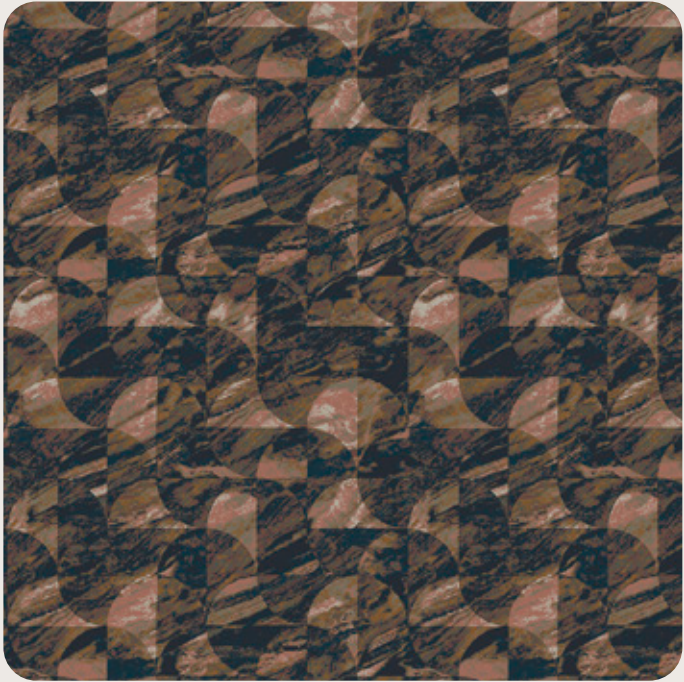
CM-WN-2502-0104

MOORISH 564

Design Width:
183cm Set

Design Length:
183cm

IN STOCK



INDENT



CM-WN-2509-0043



CM-WN-2509-0048



CM-WN-2511-0101



CM-WN-2511-0102



MOORISH 564

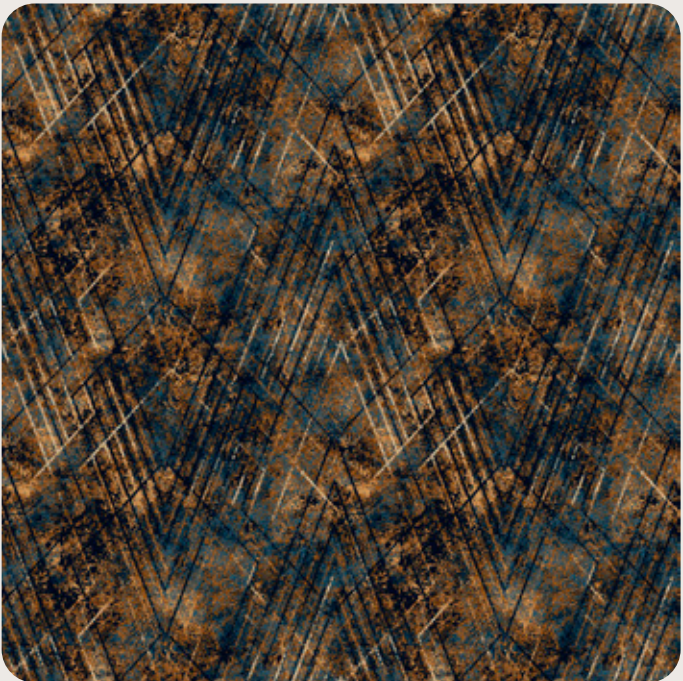


PLEXUS 548

Design Width:
183cm Set

Design Length:
180cm

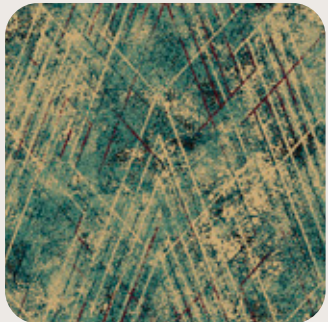
IN STOCK



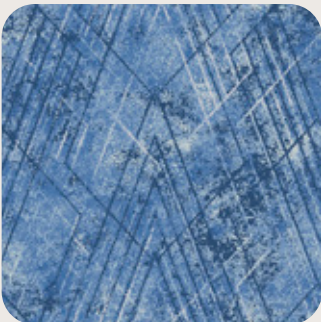
INDENT



CM-WN-2502-0100



CM-WN-2502-0103



CM-WN-2502-0106



CM-WN-2509-0089

Crafted with a luxurious woven wool-rich blend, RTW Encore by form and function is naturally fire and stain resilient. **HELICAL** delivers essential and exceptional performance for public and government commercial settings, like community centres and libraries or museums and galleries.

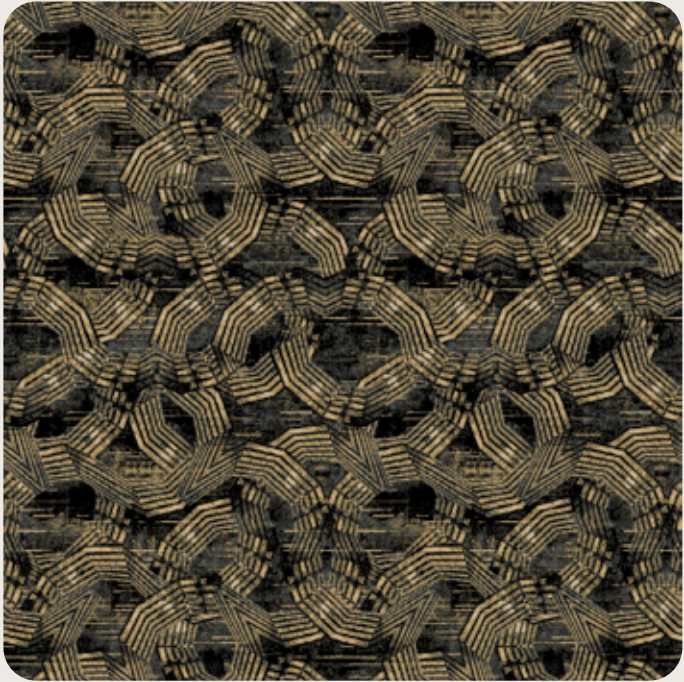


HELICAL 539

Design Width:
183cm Set

Design Length:
246cm

IN STOCK



INDENT



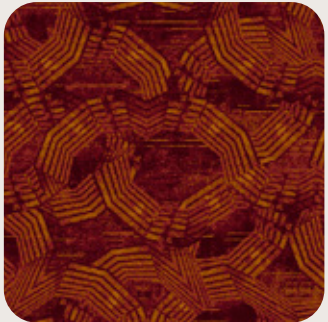
CM-WN-2502-0096



CM-WN-2502-0097



CM-WN-2502-0099



CM-WN-2502-0049



HELICAL 539

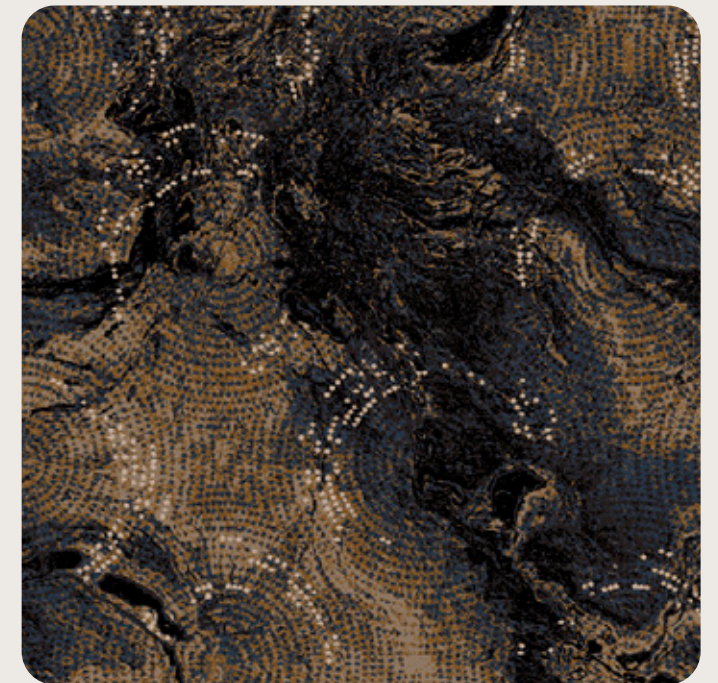


MAGMATIC 507

Total Thickness:
13.5mm

Total Weight:
5.625kg/m²

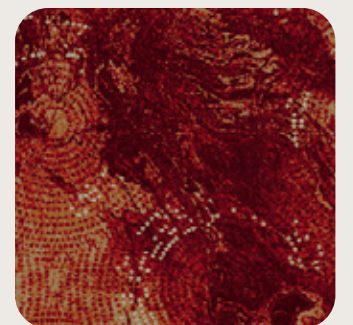
IN STOCK



INDENT



CM-WN-2502-0095



CM-WN-2509-0045



CM-WN-2509-0046



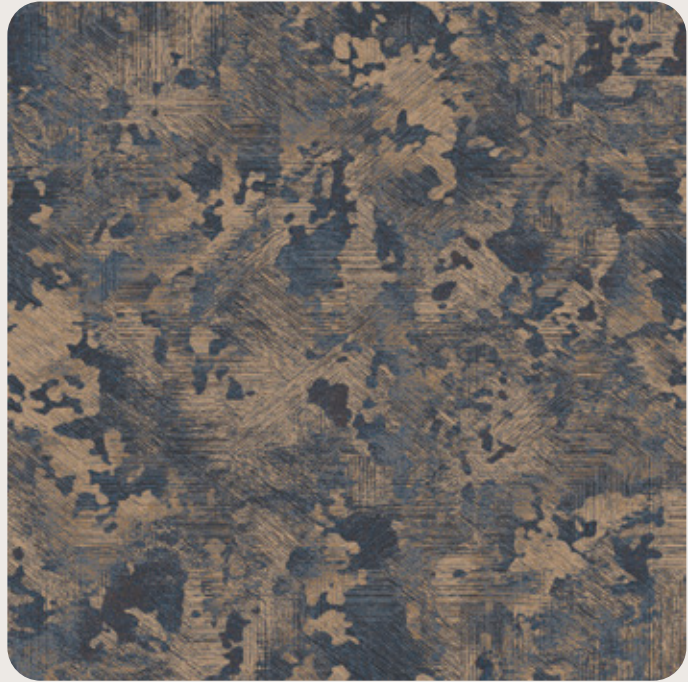
CM-WN-2509-0047

STRATUS 573

Total Thickness:
13.5cm Set

Total Weight:
5.625kg/m²

IN STOCK



INDENT



CM-WN-2502-0091



CM-WN-2502-0092



CM-WN-2502-0093



CM-WN-2502-0094



With a soft, atmospheric quality that evokes subtlety, serenity and a sense of elevation, **STRATUS** blends functional performance with refined design. Merging the practicality of carpet tiles with the creative freedom of Axminster it's an ideal choice for entertainment environments where acoustics, comfort and aesthetic impact are essential.



INTERLACE 462

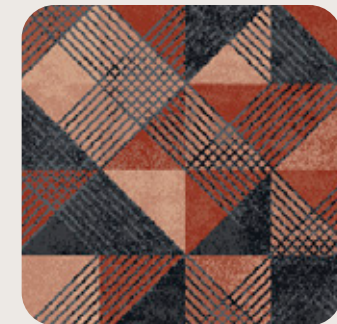
Design Width:
183cm Set

Design Length:
183cm

IN STOCK



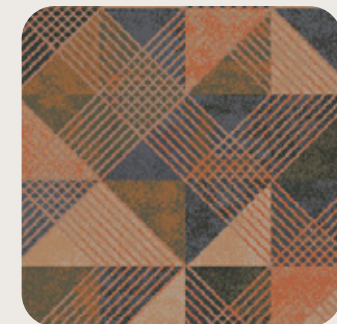
INDENT



CM-WN-2502-0209



CM-WN-2502-0211



CM-WN-2502-0212



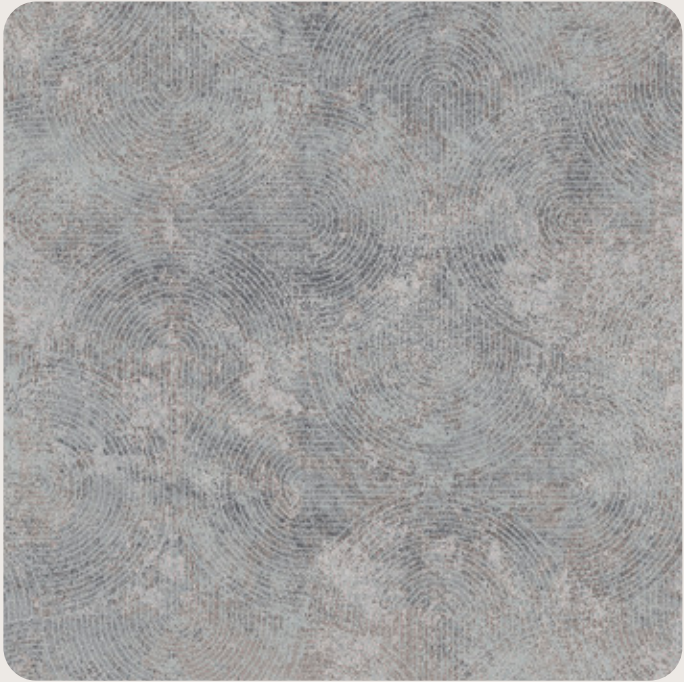
CM-WN-2502-0213

PALAIS 473

Design Width:
366cm Set

Design Length:
366cm

IN STOCK



INDENT



CM-WN-2309-0332



CM-WN-2406-0083



CM-WN-2409-0327



CM-WN-2509-0144



Set the tone on arrival, with intricate detailing and dynamic patterning designed to withstand the heavy foot traffic of hotel lobbies and public areas. **MOMENTO** will maintain its appearance over time supporting the overall aesthetic and performance needs of commercial spaces.

MOMENTO 443

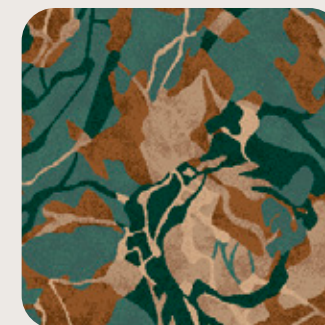
Design Width:
183cm Drop

Design Length:
250cm

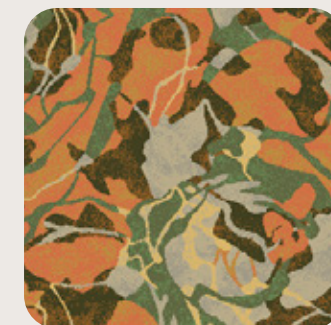
IN STOCK



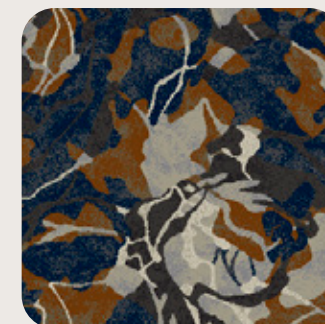
INDENT



CM-WN-2309-0281



CM-WN-2406-0081



CM-WN-2412-0636



CM-WN-2511-0268

TRACE 494

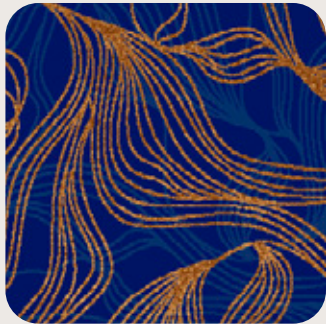
Design Width:
183cm Set

Design Length:
203cm

IN STOCK



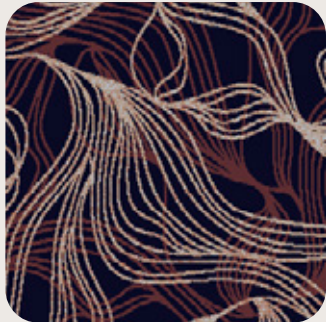
INDENT



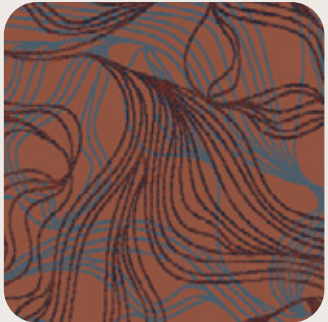
CM-WN-2309-0277



CM-WN-2502-0214



CM-WN-2502-0215

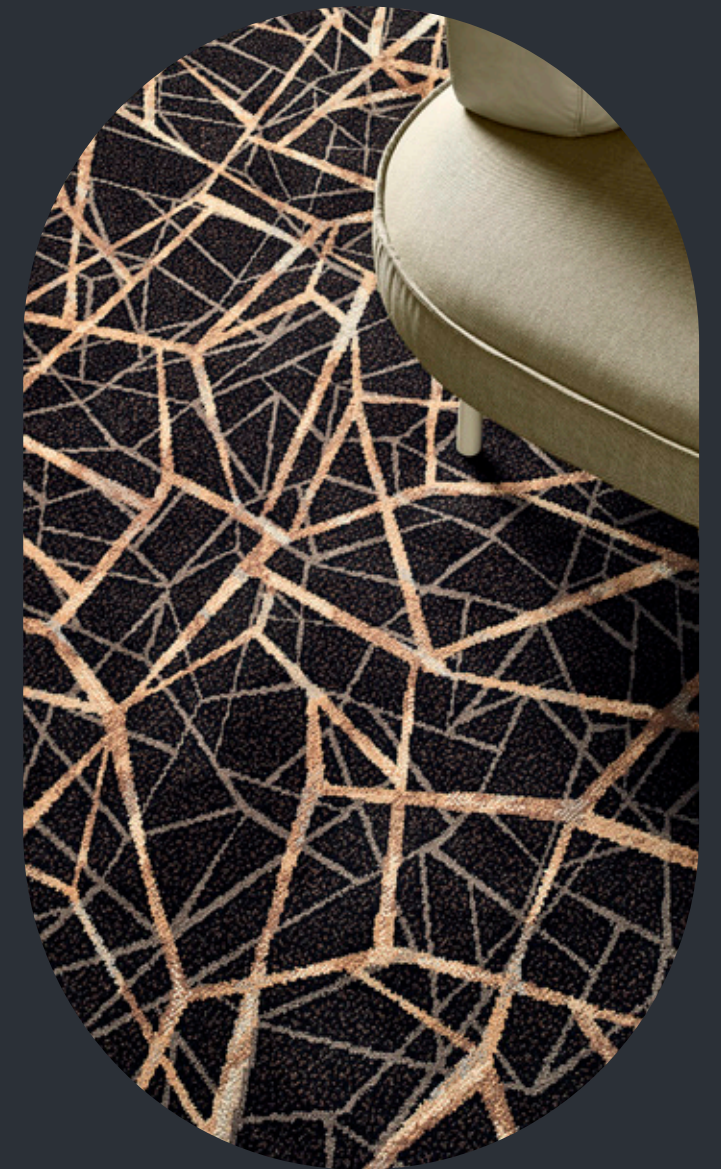


CM-WN-2502-0216



TRACE 494

For entertainment and leisure settings like event centres and sporting clubs - where the combination of durability and acoustic benefits is put to the test, **ATOMIC** with its intricate linework and structured layering is the perfect pillar to support busy venues in both every day use and high impact occasions.



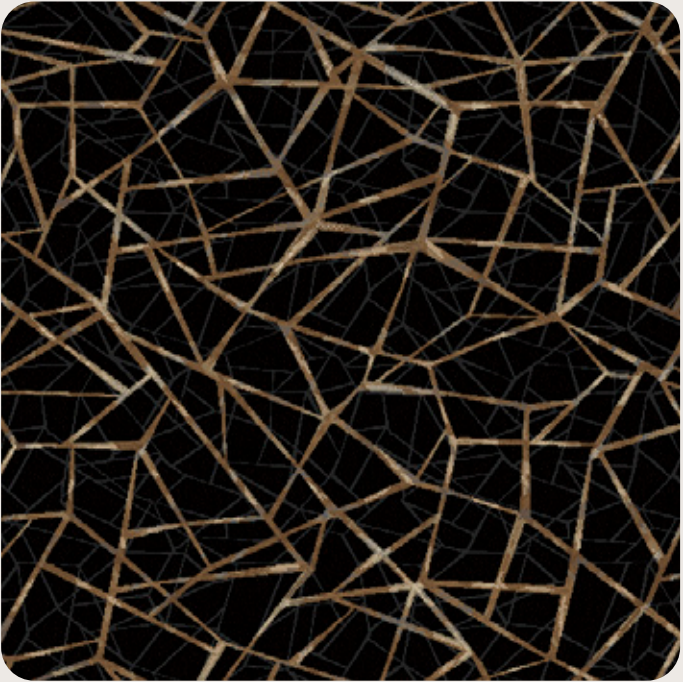


ATOMIC 616

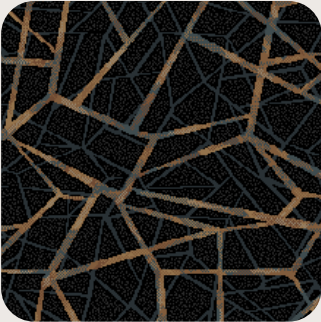
Design Width:
183cm Drop

Design Length:
181cm

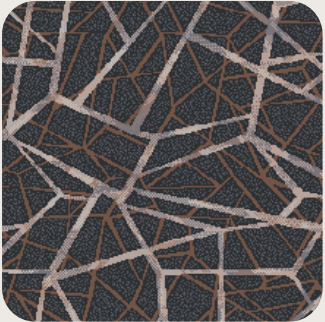
IN STOCK



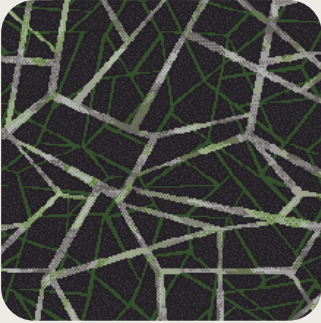
INDENT



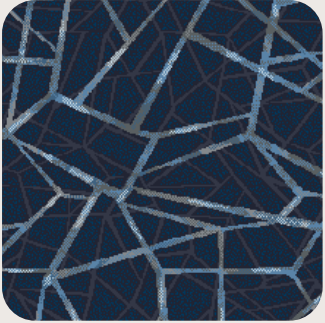
CM-WN-2511-0287



CM-WN-2511-0288



CM-WN-2511-0291



CM-WN-2511-0292

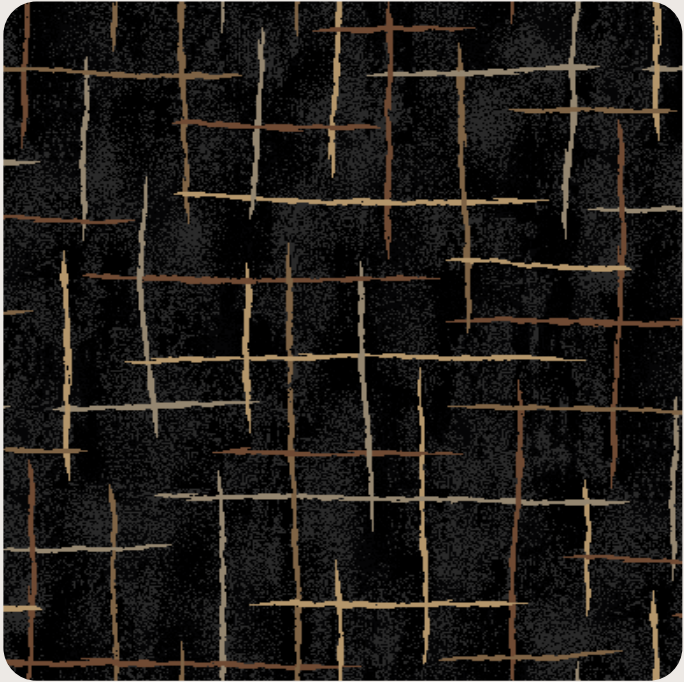
AXIS 774

Design Width:
122cm Drop

Design Length:
140cm

Broadloom Repeat:
Drop

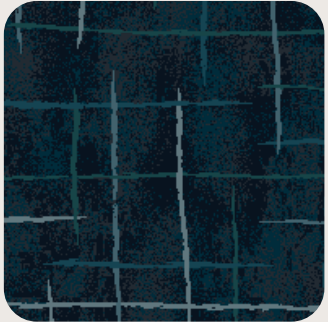
IN STOCK



INDENT



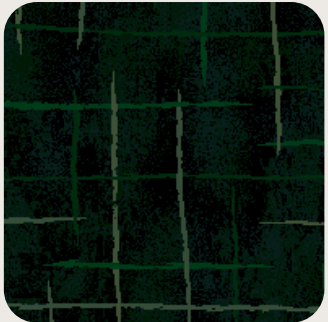
CM-WN-1903-0111



CM-WN-2511-0269



CM-WN-2511-0270



CM-WN-2511-0271



AXIS 774

TWILL brings a sense of luxury and quiet confidence to busy office and corporate environments, in particular boardrooms and meeting rooms. The tailored look and plush feel creates a sophisticated foundation for focused conversation, enhancing acoustics and performance for high use executive spaces.

TWILL 994

Design Width:
183cm Drop

Design Length:
162cm

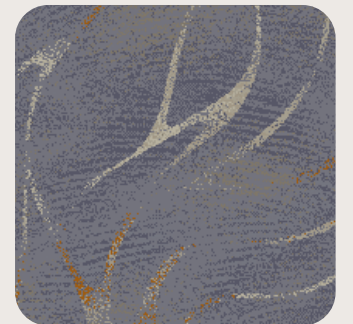
IN STOCK



INDENT



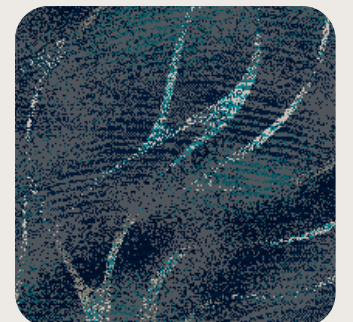
CM-WN-2206-0225



CM-WN-2511-0298



CM-WN-2511-0300



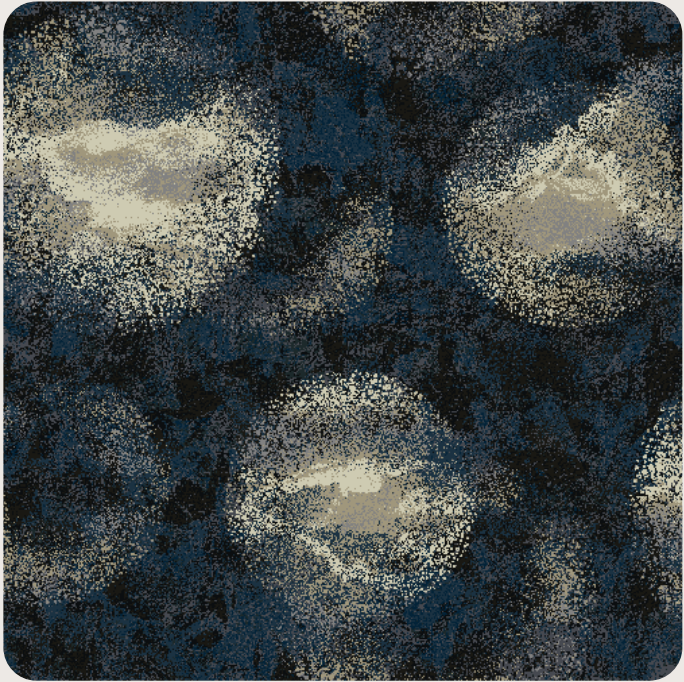
CM-WN-2511-0301

HALO 188

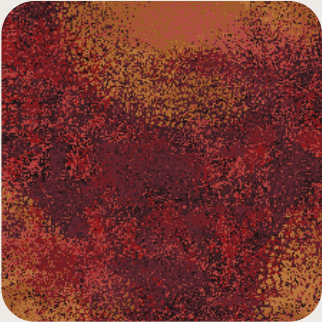
Design Width:
183cm Drop

Design Length:
183cm

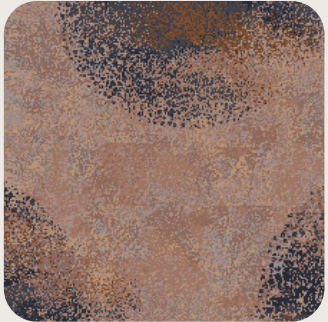
IN STOCK



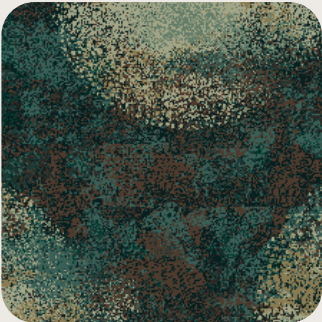
INDENT



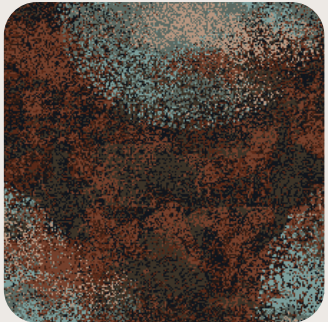
CM-WN-2502-0217



CM-WN-2502-0218



CM-WN-2502-0219



CM-WN-2502-0220



HALO 188

KEPPEL 890

Design Width:
183cm Set

Design Length:
160cm

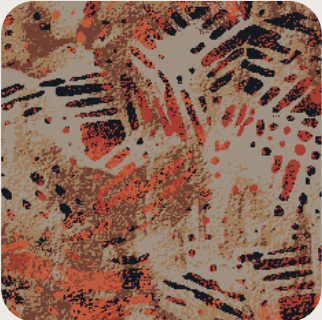
IN STOCK



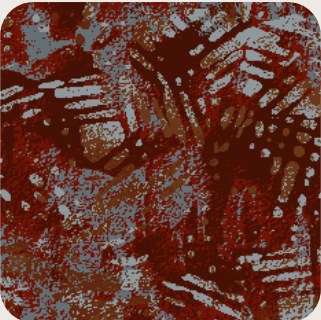
INDENT



CM-WN-2502-0232



CM-WN-2502-0233



CM-WN-2509-0197



CM-WN-2509-0198

KILT 238

Design Width:
45.7cm Set

Design Length:
45.7cm

IN STOCK



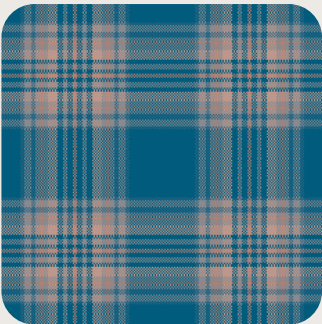
INDENT



CM-WN-2511-0277



CM-WN-2511-0279



CM-WN-2511-0283



CM-WN-2511-0285

Perfect for hospitality dining spaces, **KILT** brings a heritage pattern into the now. Anchor dining spaces with Axminster construction to mask spills and stains. It's a smart solution for high-traffic venues where visual impact and practicality must work together.



SULTAN 241

Design Width:
91.5cm Set

Design Length:
91.4cm

IN STOCK



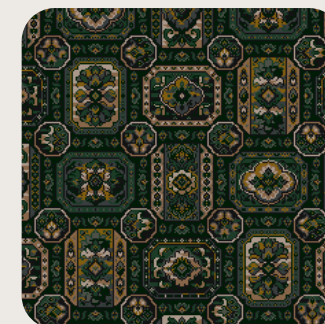
INDENT



CM-WN-2511-0273



CM-WN-2511-0274



CM-WN-2511-0275



CM-WN-2511-0276

SPECIFICATIONS

COLLECTION	RTW ENCORE
PRODUCT CATEGORY	WOVEN CARPET
CONSTRUCTION	Axminster
YARN / FIBRE	80% Wool / 20% Nylon
PILE WEIGHT	40oz
PILE HEIGHT	8mm
PITCH / BEAT UP	7x8
BACKING	Polypropylene
TOTAL THICKNESS	10.70mm
CARPET WIDTH	366cm

PERFORMANCE

TRAFFIC WARRANTY	Commercial Heavy Duty Residential 7 Year Commercial 5 Year
FIRE RATING ISO 9239.1	>4.5kw/m ² Critical Radiant Flux Suitable all areas
ELECTROSTATIC PROPENSITY	<2.2kw

CUSTOM OPTIONS

COLOUR	MOQ 200m ²
--------	-----------------------

INSTALLATION METHODS

Dual Bond
Conventional Lay
ComfiLay underlay
recommended

SUSTAINABILITY

CERTIFICATIONS	Green Label Plus
----------------	------------------

VIEW TECHNICAL
INFORMATION AND ORDER
SAMPLES QUICKLY THROUGH
OUR SAMPLE SERVICE



INSTOCK



Axminster Carpet

All edges to be cut & seam sealed prior to installation.

Cut pile carpets, particularly 'plush pile' will in some circumstances exhibit the condition known as 'shading, watermarking or pile reversal'. A cut pile carpet that has 'shaded' will show areas lighter or darker than the surrounding carpet pile. The variation is caused by the reflection of light from pile tufts which come to lay in different directions. It does not affect the wear or durability of the carpet and since it is beyond the control of the manufacturer, it is not recognised as a manufacturing flaw or fault.

SPECIFICATIONS

COLLECTION	RTW ENCORE
PRODUCT CATEGORY	WOVEN CARPET TILE
CONSTRUCTION	Axminster
YARN / FIBRE	80% Wool / 20% Nylon
PILE WEIGHT	1300g/m ² (38oz)
PILE HEIGHT	7mm
PITCH / BEAT UP	7x9
BACKING	FPE
TILE SIZE	1000 x 1000mm
TOTAL THICKNESS	13.5mm
TOTAL WEIGHT	5.625kg/m ²
CARTON SIZE	8m ²

PERFORMANCE

TRAFFIC WARRANTY	Commercial Heavy Duty Commercial 5 Year
ELECTROSTATIC PROPENSITY	<2.2kv
FIRE RATING ISO 9239.1	>4.5kw/m ² Critical Radiant Flux Suitable all areas
DIMENSIONAL STABILITY	<0.20%
RECOMMENDED ADHESIVE	Refer to our Adhesives Guide

CUSTOM OPTIONS

COLOUR	MOQ 500m ²
--------	-----------------------

INSTALLATION METHODS

Ashlar

VIEW TECHNICAL
INFORMATION AND ORDER
SAMPLES QUICKLY THROUGH
OUR SAMPLE SERVICE



INSTOCK



Carpet Tile

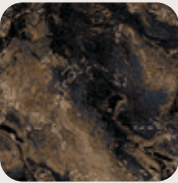
All edges to be cut & seam sealed prior to installation.

Cut pile carpets, particularly 'plush pile' will in some circumstances exhibit the condition known as 'shading, watermarking or pile reversal'. A cut pile carpet that has 'shaded' will show areas lighter or darker than the surrounding carpet pile. The variation is caused by the reflection of light from pile tufts which come to lay in different directions. It does not affect the wear or durability of the carpet and since it is beyond the control of the manufacturer, it is not recognised as a manufacturing flaw or fault.

PRODUCT



STRATUS / 573



MAGMATIC / 507





RTW
READY-TO-WEAR
ENCORE

Terms & Conditions: Specifications are subject to manufacturing tolerances and may be changed without prior notice. Dye lots may vary in colour from sample and between production lots. All product purchases are subject to Signature Floorcoverings Standard Terms & Conditions of Sale. This product is to be installed by an experienced installer. Please refer to our Technical Information Manual, Maintenance Guide and Warranty Guide for further clarification.

Disclaimer: This brochure is presented for informational purposes only. Every effort is made to ensure that product images are of an accurate representation of the product. However, they are for illustrative purposes only and colour variations may occur in actual product and between dye series. Please consult your commercial sales consultant for further information.

ABOVE: RTW ENCORE
LEVU / 526

COVER: RTW ENCORE
MOORISH / 564
HELICAL / 539
METROPOLIS / 589