

STRIKEOUT
STRIKE

Signature

One collection. Two perspectives.

Strikeout is bold simplicity.

Anchored in texture and tone, use on its own or combine with Strike for an injection of colour and create cohesive connections between spaces.

A collection reimagined.
Flip direction, and change the perspective.



STRIKEOUT II NICKEL 2-6000CB

INSTALLATION: BRICK

Minimalism Refined

A deconstructed geometric
in a palette grounded by
subtle shade duality.





INSTALLATION: ASHLAR

STRIKEOUT II GRAPHITE 2-600CB





STRIKEOUT II GALLUM 2-100CB

INSTALLATION: ASHLAR

Quietly Enhancing

Stocked in Comfi Bak® for improved acoustics, insulation and comfort underfoot.

- Made from 100% recycled PET.
- Each m² contains 48 recycled PET bottles.
- Reduces 30% of airborne sound and 32dB of impact sound.





STRIKEOUT II RHODIUM 2.5000CB

STRIKEOUT II SILICA 2.9000CB

INSTALLATION: ASHLAR, DIRECTIONAL





INSTALLATION: BRICK

STRIKEOUT II TUNGSTEN 2-8000CB



Inviting Interiors

Warmer tones with textured grained blends are inherently beautiful and calming.



STRIKEOUT II SODIUM 2-7000B

INSTALLATION: BRICK





INSTALLATION: QUARTER TURN

STRIKEOUT II CLAY 2-2000CB 88 PLANKS STONE TER299002ST50



Aesthetic Appeal

Luxurious and strong. Combine with a terrazzo luxury vinyl plank in sultry chocolate tones for absolute strength and sophistication.

A different perspective.

STRIKE
STRIKEOUT

**One collection.
Two perspectives.**

Strike is bold simplicity with a hint of colour.

Use on its own for an injection of colour, or combine with
Strikeout for a subtle interplay of texture and tone.

A collection reimagined.
Flip direction, and change the perspective.

Add a STRIKE of colour

Adapted from its base, a subtle strike of colour is infused into the base colours of Nickel and Graphite to create two unique colour stories.



STRIKE II NICKEL KRYPTON 2-600-045CB

INSTALLATION: BRICK





STRIKE II GRAPHITE OXYGEN 2-300-0190B **VIVID** DESIGNER DENIM 019-E26CB

INSTALLATION: BRICK



Let's meet

Find your way and coordinate with matching colours from Vivid 202 to define and connect your spaces – set your boundaries!



STRIKE II GRAPHITE ARGON 2-300-1070B **VIVID** BEETFOOT DIP 107-C34CB

INSTALLATION: ASHLAR





STRIKE II NICKEL XENON 2-600-103CB **VIVID** OH CHRISTMAS TREE 103-E16CB

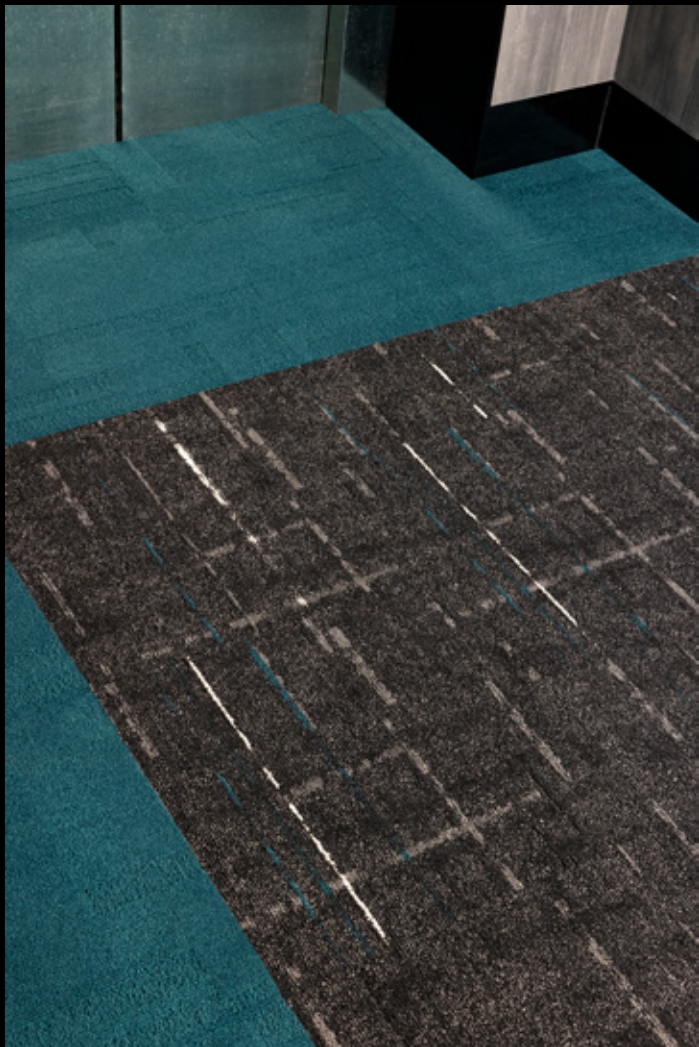
INSTALLATION: ASI LAR





INSTALLATION: ASHLAR

STRIKE II GRAPHITE NITROGEN 2-300-021CB VIVID TEAL DEAL_021-B26CB



Take it to the next level

Elevate your layout and find the perfect colour match in the Signature paint box – the quintessential companion.

Need to change the highlight colour? Spin the Vivid 202 colour wheel and land on another colour for a custom option.



STRIKE II NICKEL SELENIUM 2-600-1690B **WVD** SHIPPING SANGRIA 169-0460B

INSTALLATION: ASHLAR





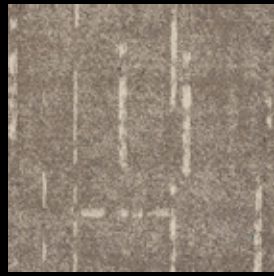
STRIKE II GRAPHITE IODINE 2-300-0540B **STRIKE II** NICKEL PHOSPHORUS 2-600-1890B **INSTALLATION:** ASHLAR



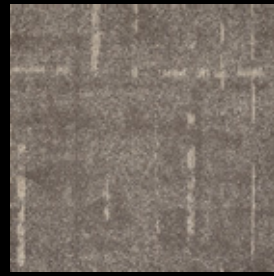
Contrasting Combination

Make it striking – mix and match for continuity and maximum impact.

Our manufacturing process ensures no two tiles are the same. Please note that there may be batch variations from different dye lots.



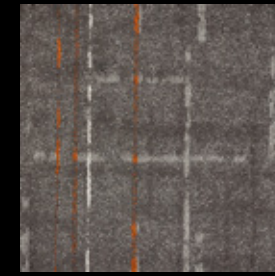
STRIKEOUT II TUNGSTEN
2-800CB



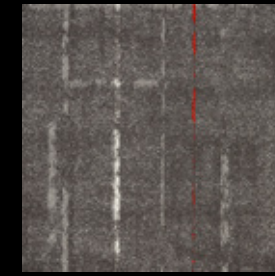
STRIKEOUT II SODIUM
2-700CB



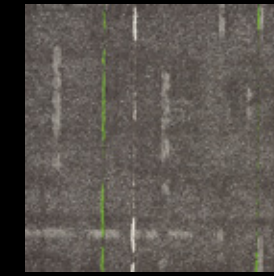
STRIKEOUT II NICKEL
2-600CB



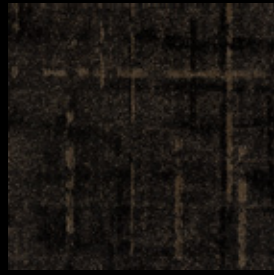
STRIKE II NICKEL PHOSPHORUS
2-600-189CB



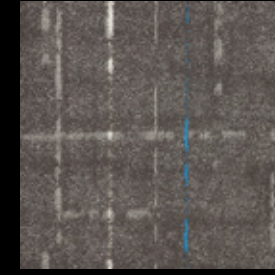
STRIKE II NICKEL SELENIUM
2-600-169CB



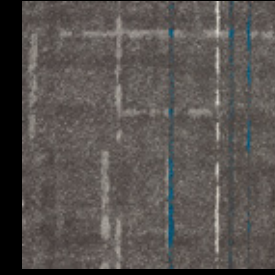
STRIKE II NICKEL KRYPTON
2-600-045CB



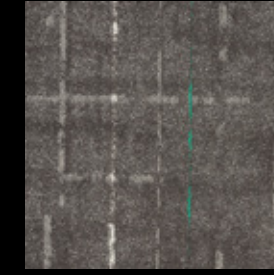
STRIKEOUT II CLAY
2-200CB



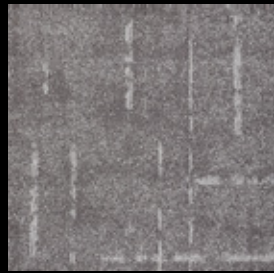
STRIKE II NICKEL HELIUM
2-600-132CB



STRIKE II NICKEL CHROMIUM
2-600-071CB



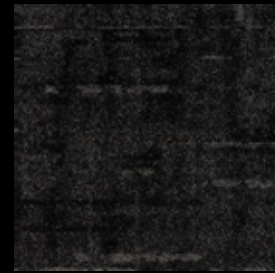
STRIKE II NICKEL XENON
2-600-103CB



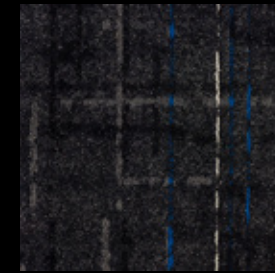
STRIKEOUT II RHODIUM
2-500CB



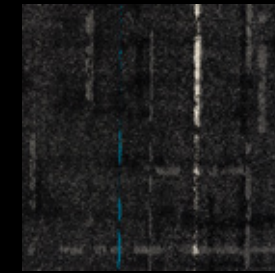
STRIKEOUT II GALLIUM
2-100CB



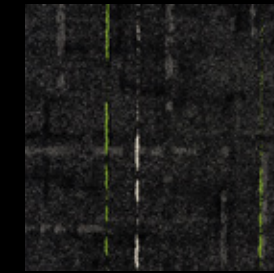
STRIKEOUT II GRAPHITE
2-300CB



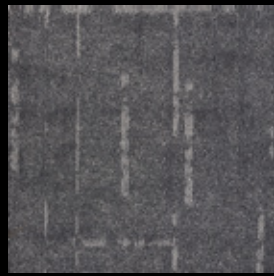
STRIKE II GRAPHITE OXYGEN
2-300-019CB



STRIKE II GRAPHITE NITROGEN
2-300-021CB



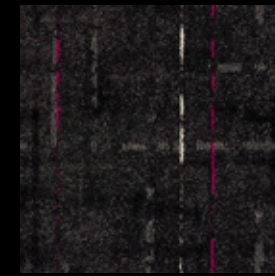
STRIKE II GRAPHITE SULPHUR
2-300-124CB



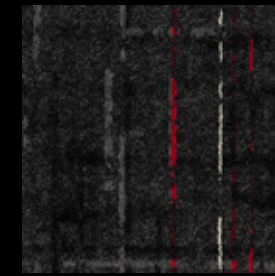
STRIKEOUT II SILICA
2-900CB



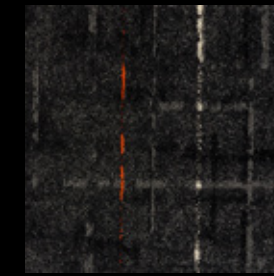
STRIKEOUT II CHARCOAL
2-400CB



STRIKE II GRAPHITE ARGON
2-300-107CB

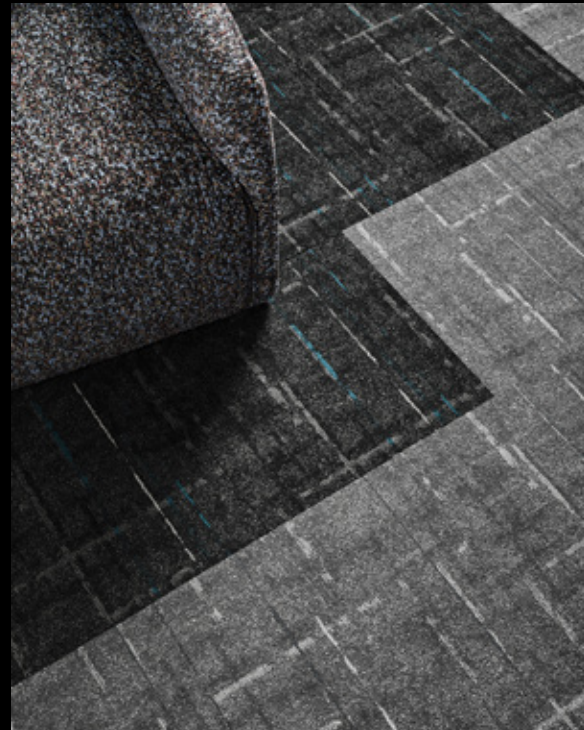


STRIKE II GRAPHITE HYDROGEN
2-300-137CB



STRIKE II GRAPHITE IODINE
2-300-054CB

Construction	Textured Loop & Tip Shear
Yarn/Fibre	Solution Dyed Nylon
Pile Weight	612g/m ² (18oz)
Pile Height	4mm
Gauge	1/12
Tile Size	500mm x 500mm
Total Thickness	10mm
Carton Size	5m ²
Total Weight	4.4kg/m ²
Dimensional Stability	<0.15%
Backing	Comfi Bak®
Electrostatic Propensity	<3.0kv
Fire Rating ISO 9239.1	>5.2 kw/m ² Critical Radiant Flux
Recommended Adhesive	RLA Polymers GS300
Installation Method	Quarter Turn, Ashlar, Directional, Brick
Availability	In Stock
Thermo Bak™ Option	50m ² Minimum
Shapes Option	50m ² Minimum
Vivid 202 Custom	50m ² Minimum
ACCS Rating	Commercial Extra Heavy Duty
Warranty	15 Years
Fire	Suitable All Areas
Stain/Soil	Ultra Gard
Sustainability	GreenTag® GreenRate Level A EPDs and Declare Labels WELL & LBC Eligible



WITH THANKS TO OUR FURNITURE SUPPLIER **ZENITH**

MAKING AN IMPACT WHILE REDUCING OUR IMPACT

CARBON NEUTRAL ORGANISATION

Signature Floors is certified carbon neutral by Climate Active. We are proud to say that we have made choices and changes in the way we do business to ensure our carbon emissions are equal to net zero.

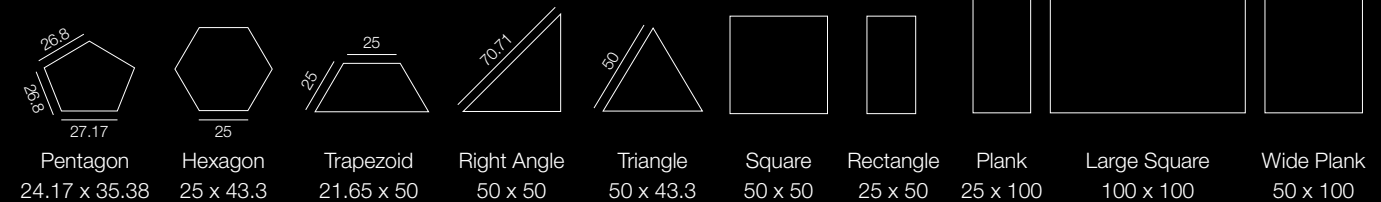


REINSTATE. REJUVENATE. REGENERATE.

Signature Floors' local carpet tile recycling initiative here in Australia reaffirms our ongoing commitment to closing the loop and creating a circular economy. Your Signature carpet tiles are designed with longevity and performance in mind. However, when it comes time to say goodbye to your flooring, carpet tiles can be returned as part of our product stewardship. Returned tiles are first assessed and ultimately reused or recycled through a process of rejuvenation and yarn regeneration.



Go bespoke with 10 Shapes by Signature® and design your way for a minimum order quantity of 50m²



Thermo Bak™ is recommended for Shapes by Signature®.



au 1800 150 554
nz 0800 150 555
signaturefloors.com.au
signaturefloors.co.nz



CERTIFICATIONS

Sustainable practices underpin everything we do, supported by our GreenRate Level A certification from Global GreenTag®. We promote material transparency with Declare labels, and are actively increasing the recycled content in our products while striving to maintain carbon neutrality.



Terms & conditions: Specifications are subject to manufacturing tolerances and may be changed without prior notice. Product may vary in colour from sample and between production lots. All product purchases are subject to Signature Floorcoverings Standard Terms & Conditions of Sale. Please refer to our Technical Information Manual, Maintenance Guide & Warranty Guide for further clarification. © Signature Floors 05/2023

STRIKE
STRIKEOUT