



PRISM **PLANKS**

*Signature*



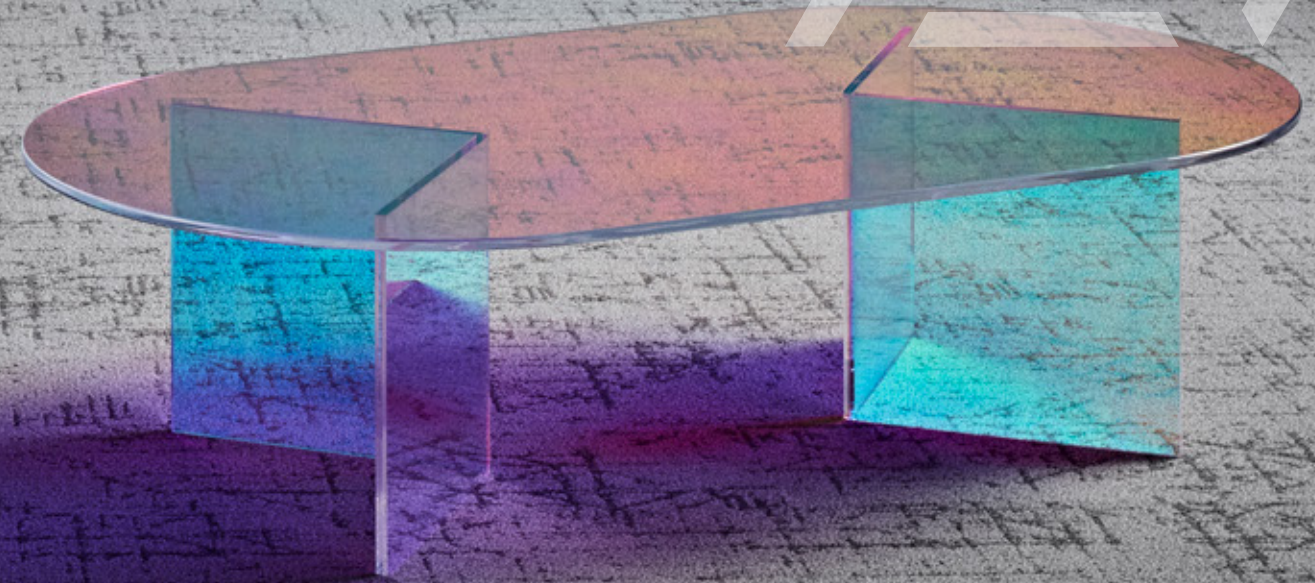
THE MARVEL OF LIGHT  
TRANSFORMING INTO  
A VIBRANT WONDER

**PRISM PLANKS** is an ode to the shapeshifting characteristic of a prism, replete with surfaces and angles, the Collection emulates the reflective and refractive play of light and fragments it into a colour story in its entirety.



## FACET

Just like a glass prism becomes the catalyst to emit light, **FACET** becomes the base layer to enhance the spectral components of the Prism Planks collection. On its own, it offers moody variations in sophisticated neutral tones with fractured triangular impressions.



Facet Wavelength 5-000-000PL  
Installation Method Ashlar



## REFRACT

As light awaits to be splintered, **REFRACT** bounces and severs, unravelling the secrets of beauty. A single layer of colour is bestrewn onto Facet penta as it evolves from a neutral palette to a gradual infusion of colour.



Refract Penta Swamped 2-114-000PL  
Refract Penta Spruce 2-094-000PL  
Installation Method Ashlar



## REFLECT

In the final stage of the phenomenon, **REFLECT** completes the collection by letting light transcend and transform into a burst of colours. Spectacularly landing on the neutral base that is Facet penta, the colours from Refract pair together, dispersing into a kaleidoscopic wonder.



Reflect Penta Arctic Nautical 2-131-108PL  
Installation Method Ashlar





Tessellate **Facet**, **Refract** and **Reflect** together in one colourway to create a harmonious tonal ascension.

Shown here as a herringbone, the colours softly intermingle into a crescendo of colour.

Facet Penta 2-000-000PL  
Refract Penta Crème 2-188-000PL  
Refract Penta Bronze 2-189-000PL  
Reflect Penta Crème Bronze 2-188-189PL  
Installation Method Herringbone





Punctuate zoned spaces with contemporary refinement using a lighter **Facet** together with **Reflect**.

Use contrasting colours of **Facet** in conjunction with the rest of the collection for continuity and expression.

Facet Amici 3-000-000PL  
Reflect Penta Swamped Spruce 2-114-094PL  
88 Planks Colours Olive COL110ST50  
Installation Method Ashlar





Create wayfinding by combining a darker tone of **Facet** with **Refract** and **Reflect** to create a strong contrast and visual cues.

Facet Abbe 1-000-000PL  
Refract Penta Sangria 2-169-000PL  
Reflect Penta Coral Sangria 2-167-169PL  
Installation Method Ashlar





Add vibrancy to your floor layout with complementing **Vivid 202** in co-ordinating colours.

**Prism Planks** can be subdued or lively depending on what you combine it with – reimagine and get creative with your design.

- Refract Penta Whale 2-071-000PL
- Refract Penta Lake 2-121-000PL
- Reflect Penta Lake Whale 2-121-071PL
- Vivid Whale Tail VIVID071-B26
- Vivid Lake Como VIVID121-A24
- Installation Method Ashlar





Facet Ray 7-000-000PL  
88 Planks - Woods - Urban Oak WOO200603ST50  
Installation Method Ashlar



Facet White Light 6-000-000PL  
88 Planks - Colours - Gunmetal COL095ST50  
Installation Method Ashlar

Bend the rules and transform your project by combining with tones and textures from the **88 Planks Collection**. Illustrate flooring that requires delineation to create versatile spaces.





Custom design your floor with one of 10 Shapes by Signature®. Select designs and colours to create unique patterns and layouts for complete flexibility.

▶ Minimum order quantity of 100m<sup>2</sup>

▶ Thermo Bak™ recommended for Shapes by Signature®



Pentagon  
24.17 x 35.38



Hexagon  
25 x 43.3



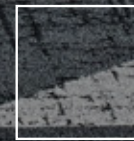
Trapezoid  
21.65 x 50



Right Angle  
50 x 50



Triangle  
50 x 43.3



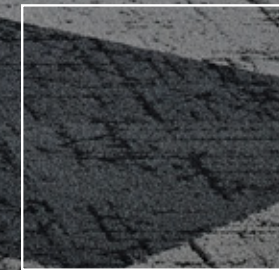
Square  
50 x 50



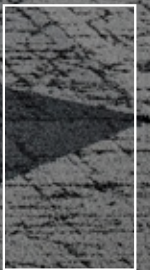
Rectangle  
25 x 50



Plank  
25 x 100



Large Square  
100 x 100



Wide Plank  
50 x 100

Facet Porro 4-000-000RA ▶  
Facet Disperse 8-000-000RA ▶





Facet Penta	2-000-000PL
Refract Penta Pistachio	2-002-000PL
Refract Penta Green	2-045-000PL
Reflect Penta Pistachio Green	2-002-045PL
Installation Method	Ashlar

# MAKING AN IMPACT WHILE REDUCING OUR IMPACT

## ECONYL® REGENERATED NYLON



Prism Planks is constructed using 100% Econyl® fibre. Nylon waste – otherwise polluting the Earth – is broken down and transformed into regenerated nylon. It's strength and quality remain allowing it to be recycled, recreated and remoulded again and again, without having to use new resources, making this a sustainable flooring choice.

## CARBON NEUTRAL ORGANISATION



Signature Floors Australia is certified carbon neutral by Climate Active. We are proud to say that we have made choices and changes in the way we do business to ensure our carbon emissions are equal to net zero.

## CIRCUL8



Signature Floors' local carpet tile recycling initiative here in Australia reaffirms our ongoing commitment to closing the loop and creating a circular economy.

## CERTIFICATIONS



Prism Planks is GreenTag® GreenRate Level A certified for Green Star Projects and also contributes to points in the WELL Building Standard and Living Building Challenge. We promote material transparency with Declare Labels and EPD documentation.

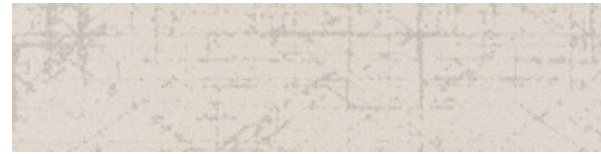
**Declare.**



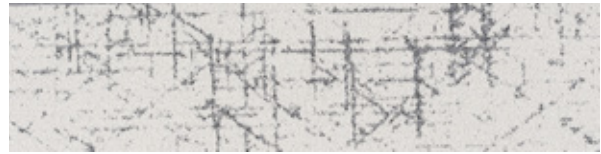
To find out more about our sustainability practices, visit our website.



# FACET



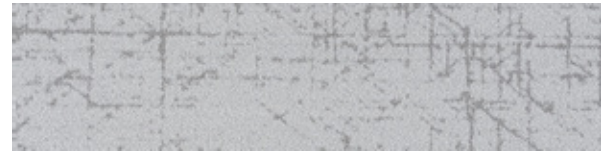
**FACET Ray** 7-000-000PL



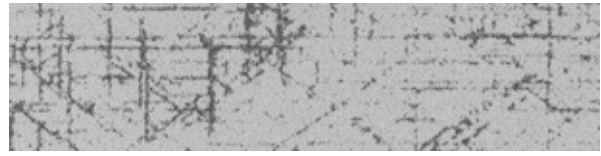
**FACET White Light** 6-000-000PL



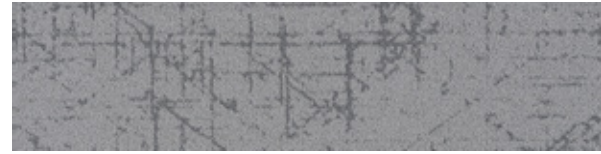
**FACET Penta** 2-000-000PL



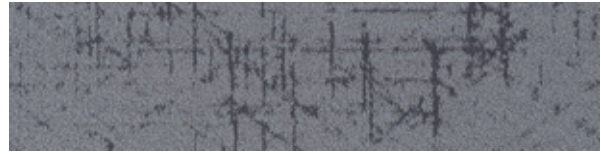
**FACET Wavelength** 5-000-000PL



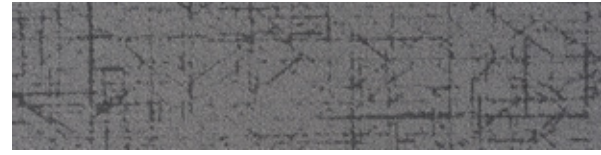
**FACET Porro** 4-000-000PL



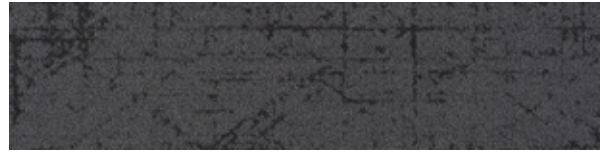
**FACET Amici** 3-000-000PL



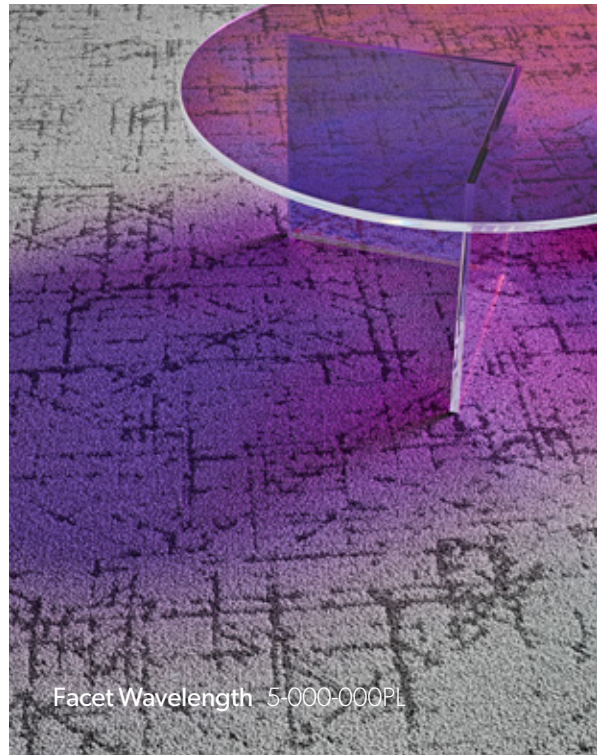
**FACET Disperse** 8-000-000PL



**FACET Penta** 2-000-000PL

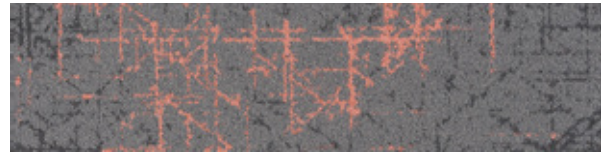


**FACET Abbe** 1-000-000PL

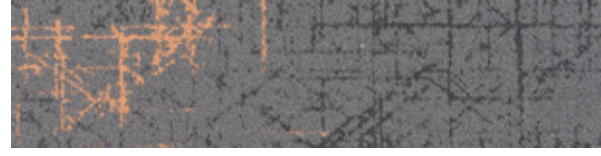


Facet Wavelength 5-000-000PL

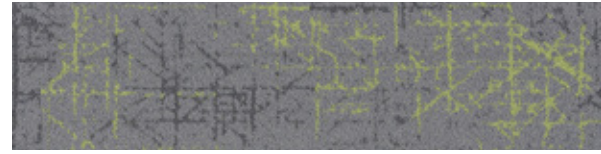
# REFRACT



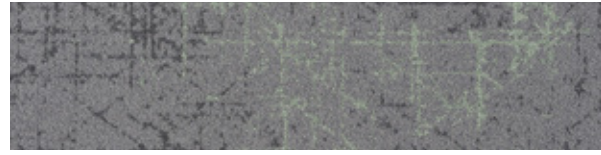
**REFRACT Penta Coral** 2-167-000PL



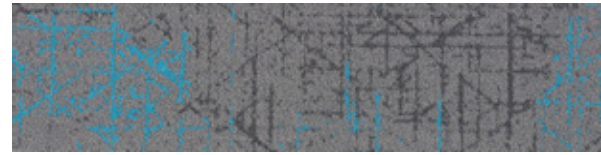
**REFRACT Penta Crème** 2-188-000PL



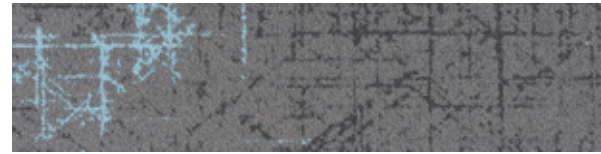
**REFRACT Penta Pistachio** 2-002-000PL



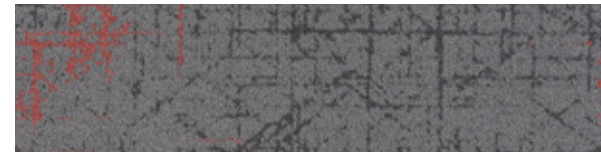
**REFRACT Penta Swamped** 2-114-000PL



**REFRACT Penta Lake** 2-121-000PL



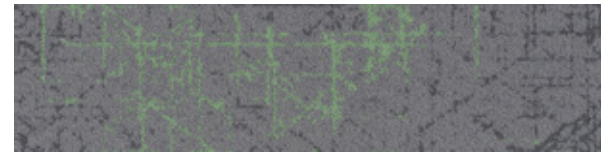
**REFRACT Penta Arctic** 2-131-000PL



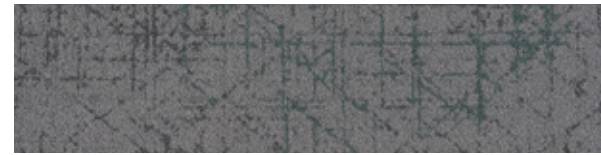
**REFRACT Penta Sangria** 2-169-000PL



**REFRACT Penta Bronze** 2-189-000PL



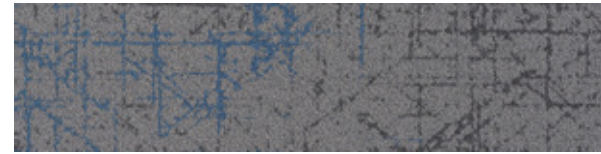
**REFRACT Penta Green** 2-045-000PL



**REFRACT Penta Spruce** 2-094-000PL

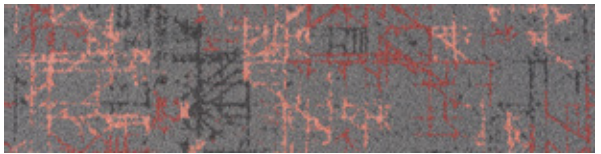


**REFRACT Penta Whale** 2-071-000PL

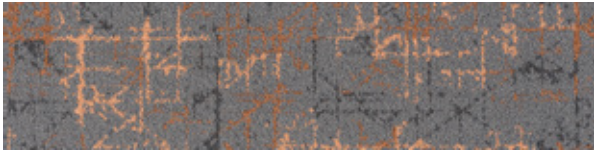


**REFRACT Penta Nautical** 2-108-000PL

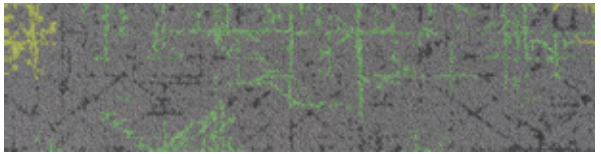
# REFLECT



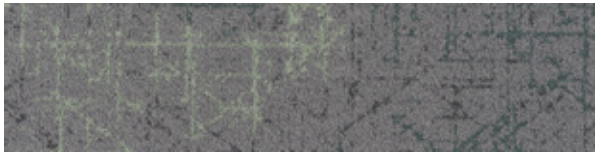
**REFLECT Penta Coral Sangria** 2-167-169PL



**REFLECT Penta Crème Bronze** 2-188-189PL



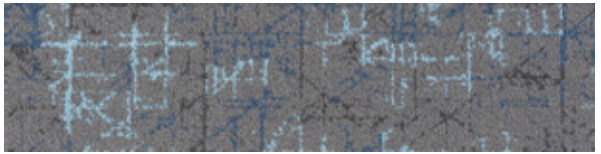
**REFLECT Penta Pistachio Green** 2-002-045PL



**REFLECT Penta Swamped Spruce** 2-114-094PL



**REFLECT Penta Lake Whale** 2-121-071PL



**REFLECT Penta Arctic Nautical** 2-131-108PL

Our manufacturing process ensures no two planks are the same.  
Please note that there may be batch variations from different dye lots.



# SPECIFICATION

<b>Product</b>	Facet
<b>Construction</b>	Multi-level Loop
<b>Yarn/Fibre</b>	ECONYL® Recycled Nylon
<b>Pile Weight</b>	680g/m <sup>2</sup> (20oz)
<b>Pile Height</b>	4mm±0.5mm
<b>Gauge</b>	1/10"
<b>Tile Size</b>	250mm x 1000mm
<b>Total Thickness</b>	7mm±0.5mm
<b>Carton Size</b>	4m <sup>2</sup>
<b>Total Weight</b>	5kg/m <sup>2</sup>
<b>Dimensional Stability</b>	<0.15%
<b>Backing</b>	Thermo Bak™
<b>Electrostatic Propensity</b>	<3.0kv
<b>Fire Rating ISO 9239.1</b>	>4.7 kw/m <sup>2</sup> Critical Radiant Flux
<b>Recommended Adhesive</b>	RLA Polymers GS300
<b>Installation Method</b>	Ashlar, Herringbone, Basketweave
<b>Availability</b>	In Stock
<b>Comfi Bak® Option</b>	100m <sup>2</sup> Minimum
<b>Shapes® Option</b>	100m <sup>2</sup> Minimum
<b>Vivid Custom</b>	N / A
<b>ACCS Rating</b>	Commercial Extra Heavy Duty
<b>Warranty</b>	15 Year
<b>Fire</b>	Suitable All Areas
<b>Stain/Soil</b>	Ultra Gard
<b>Sustainability</b>	GreenTag® GreenRate Level A Certified EPDs & Declare Labels WELL & LBC Eligible

# FACET

# REFRACT

<b>Refract</b>	Reflect
<b>Multi-level Loop</b>	Multi-level Loop
<b>ECONYL® Recycled Nylon</b>	ECONYL® Recycled Nylon
<b>714g/m<sup>2</sup> (21oz)</b>	748g/m <sup>2</sup> (22oz)
<b>4mm±0.5mm</b>	4mm±0.5mm
<b>1/10"</b>	1/10"
<b>250mm x 1000mm</b>	250mm x 1000mm
<b>7mm±0.5mm</b>	7mm±0.5mm
<b>4m<sup>2</sup></b>	4m <sup>2</sup>
<b>5kg/m<sup>2</sup></b>	5kg/m <sup>2</sup>
<b>&lt;0.15%</b>	<0.15%
<b>Thermo Bak™</b>	Thermo Bak™
<b>&lt;3.0kv</b>	<3.0kv
<b>&gt;5.4 kw/m<sup>2</sup> Critical Radiant Flux</b>	>4.8 kw/m <sup>2</sup> Critical Radiant Flux
<b>RLA Polymers GS300</b>	RLA Polymers GS300
<b>Ashlar, Herringbone, Basketweave</b>	Ashlar, Herringbone, Basketweave
<b>In Stock</b>	In Stock
<b>100m<sup>2</sup> Minimum</b>	100m <sup>2</sup> Minimum
<b>100m<sup>2</sup> Minimum</b>	100m <sup>2</sup> Minimum
<b>100m<sup>2</sup> Minimum</b>	100m <sup>2</sup> Minimum
<b>Commercial Extra Heavy Duty</b>	Commercial Extra Heavy Duty
<b>15 Year</b>	15 Year
<b>Suitable All Areas</b>	Suitable All Areas
<b>Ultra Gard</b>	Ultra Gard
<b>GreenTag® GreenRate Level A Certified</b>	GreenTag® GreenRate Level A Certified
<b>EPDs &amp; Declare Labels</b>	EPDs & Declare Labels
<b>WELL &amp; LBC Eligible</b>	WELL & LBC Eligible

# REFLECT

<b>Reflect</b>	Reflect
<b>Multi-level Loop</b>	Multi-level Loop
<b>ECONYL® Recycled Nylon</b>	ECONYL® Recycled Nylon
<b>748g/m<sup>2</sup> (22oz)</b>	748g/m <sup>2</sup> (22oz)
<b>4mm±0.5mm</b>	4mm±0.5mm
<b>1/10"</b>	1/10"
<b>250mm x 1000mm</b>	250mm x 1000mm
<b>7mm±0.5mm</b>	7mm±0.5mm
<b>4m<sup>2</sup></b>	4m <sup>2</sup>
<b>5kg/m<sup>2</sup></b>	5kg/m <sup>2</sup>
<b>&lt;0.15%</b>	<0.15%
<b>Thermo Bak™</b>	Thermo Bak™
<b>&lt;3.0kv</b>	<3.0kv
<b>&gt;4.8 kw/m<sup>2</sup> Critical Radiant Flux</b>	>4.8 kw/m <sup>2</sup> Critical Radiant Flux
<b>RLA Polymers GS300</b>	RLA Polymers GS300
<b>Ashlar, Herringbone, Basketweave,</b>	Ashlar, Herringbone, Basketweave,
<b>In Stock</b>	In Stock
<b>100m<sup>2</sup> Minimum</b>	100m <sup>2</sup> Minimum
<b>100m<sup>2</sup> Minimum</b>	100m <sup>2</sup> Minimum
<b>100m<sup>2</sup> Minimum</b>	100m <sup>2</sup> Minimum
<b>Commercial Extra Heavy Duty</b>	Commercial Extra Heavy Duty
<b>15 Year</b>	15 Year
<b>Suitable All Areas</b>	Suitable All Areas
<b>Ultra Gard</b>	Ultra Gard
<b>GreenTag® GreenRate Level A Certified</b>	GreenTag® GreenRate Level A Certified
<b>EPDs &amp; Declare Labels</b>	EPDs & Declare Labels
<b>WELL &amp; LBC Eligible</b>	WELL & LBC Eligible





# FURNITURE PARTNERS

**Didier®**   **Doweljones**  
**ZENITH**   **ownworld**

innovation & inspiration



AU 1800 150 554  
NZ 0800 150 555  
[signaturefloors.com.au](http://signaturefloors.com.au)  
[signaturefloors.co.nz](http://signaturefloors.co.nz)

Limitations of the printing process may not represent the actual colour of the product. Please refer to samples for final colour selection.

Terms & conditions: Specifications are subject to manufacturing tolerances and may be changed without prior notice. Product may vary in colour from sample and between production lots. All product purchases are subject to Signature Floorcoverings Standard Terms & Conditions of Sale. Please refer to our Technical Information Manual, Maintenance Guide & Warranty Guide for further clarification. © Signature Floors 10/2022

See detailed installation guidelines & warranty info online.