

mark
made



A STATEMENT OF ARTISTIC EXPRESSION

innovation & inspiration

Signature
floorconcepts

ENGRAVE MARKING 610WPCB



ENGRAVE BRUSHWORK 801WPCB



ENGRAVE LINO CUT 802WPCB



ETCHING SHADING 610WPCB



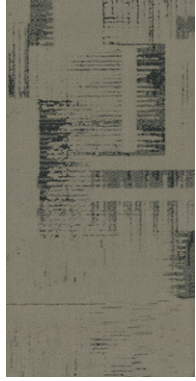
ETCHING CANVAS 801WPCB



ETCHING PAPER 802WPCB



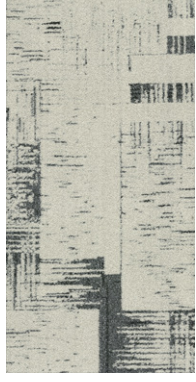
ENGRAVE IMPRESSION 409WPCB



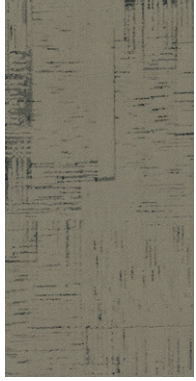
ENGRAVE PAINT 702WPCB



ENGRAVE CHISEL 904WPCB



ETCHING HATCHING 409WPCB



ETCHING DRAW 702WPCB



ETCHING CHALK 904WPCB



ENGRAVE STAMP 309WPCB



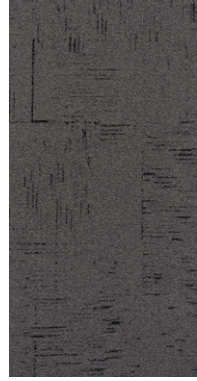
ENGRAVE STENCIL 407WPCB



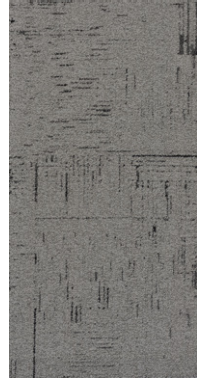
ENGRAVE EMBOSS 510WPCB



ETCHING EMBED 309WPCB



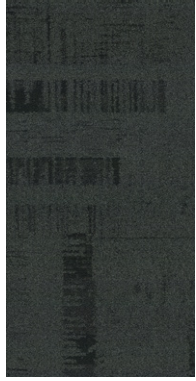
ETCHING GESTURE 407WPCB



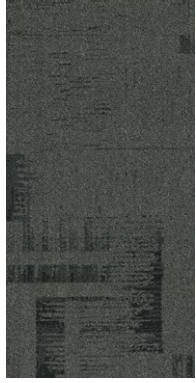
ETCHING SKETCH 510WPCB



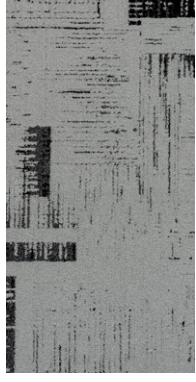
ENGRAVE SCRAPE 108WPCB



ENGRAVE INGRAIN 201WPCB



ENGRAVE SCRIBE 508WPCB



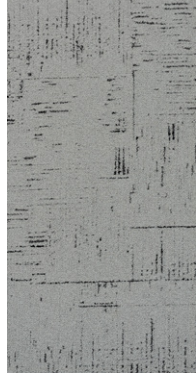
ETCHING SCRIBBLE 108WPCB



ETCHING STIPPLE 201WPCB



ETCHING CARVE 508WPCB



Our manufacturing process ensures no two tiles are the same. Please note that there may be batch variations from different dye lots.



Product Construction	Engrave & Etching Multi-level Loop
Yarn/Fibre	ECONYL® Regenerated Nylon
Pile Weight	949g/m ² (28oz)
Pile Height	5mm
Gauge	1/10
Tile Size	500mm x 1000mm
Total Thickness	11mm
Carton Size	4m ²
Total Weight	5.2kg/m ²
Dimensional Stability	<0.15%
Backing	Comfi Bak®
Electrostatic Propensity	<3.0kv
Fire Rating ISO 9239.1	6.2 kw/m ² Critical Radiant Flux
Recommended Adhesive	RLA Polymers GS300
Installation Method	Directional, Ashlar, Brick
Availability	In Stock
Thermo Bak™ Option	100m ² Minimum
Shapes Option	100m ² Minimum
ACCS Rating	Commercial Extra Heavy Duty
Warranty	15 Years
Fire	Suitable All Areas
Stain/Soil	Ultra Gard
Sustainability	GreenTag® GreenRate Level A Certified EPDs and Declare Labels WELL & LBC Eligible



ENGRAVE LINOCUT 802WPCB



ETCHING PAPER 802WPCB



MAKING AN IMPACT WHILE REDUCING OUR IMPACT



To find out more about our sustainability practices, visit our website.

ECONYL® REGENERATED NYLON

Mark Made is constructed using 100% ECONYL® regenerated nylon. Nylon waste – otherwise polluting the Earth – is broken down and transformed into regenerated nylon. Its strength and quality remain allowing it to be recycled, recreated and remoulded again and again, without having to use new resources, making this a sustainable flooring choice.



CARBON NEUTRAL ORGANISATION

Signature Floors Australia is certified carbon neutral by Climate Active. We are proud to say that we have made choices and changes in the way we do business to ensure our carbon emissions are equal to net zero.



CIRCUL8

Signature Floors' local carpet tile recycling initiative here in Australia reaffirms our ongoing commitment to closing the loop and creating a circular economy.



CERTIFICATIONS

Mark Made is GreenTag® GreenRate Level A certified for Green Star Projects and also contributes to points in the WELL Building Standard and Living Building Challenge. We promote material transparency with Declare Labels and EPD documentation.





au 1800 150 554
nz 0800 150 555
signaturefloors.com.au
signaturefloors.co.nz

Signature
floorconcepts

Terms & Conditions: Specifications are subject to manufacturing tolerances and may be changed without prior notice. Product may vary in colour from sample and between production lots. All product purchases are subject to Signature Floors coverings Standard Terms & Conditions of Sale. Please refer to our Technical Information Manual, Maintenance Guide & Warranty Guide for further clarification. © Signature Floors 02/2024