



mark  
made

Signature

**mark  
made**

## A STATEMENT OF ARTISTIC EXPRESSION

Mark Made takes inspiration from the primal act of making patterns, designs, shapes and textures. Story telling created through strokes, lines and gestures, with every space a string of unspoken words. Every colour and every hue a whisper of imagination, the canvas unveiling the beauty in the organic and the raw.

Uniquely impressive, Mark Made is a wide plank collection featuring 2 complementary designs – Engrave and Etching – in 12 coordinating tones composed of 100% ECONYL® regenerated nylon.





**ENGRAVE** IMPRESSION 409WPCB | INSTALLATION: ASHLAR



With depth and intensity, Engrave features bold and defined impressions.

NUANCED AND WITH  
A SUBTLE AESTHETIC,  
ETCHING OFFERS  
DELICATE, FINE LINES.



**ETCHING** CANVAS 801WPOB INSTALLATION: ASHLAR





ENGRAVE LINOCUT 802WPCB & ETCHING PAPER 802WPCB INSTALLATION: ASHLAR

ENGRAVE AND ETCHING  
GENTLY MORPH INTO  
A GRADUAL BLEND BY  
BORROWING MARKINGS,  
CREATING A GRACEFULLY

TRANSITIONED SPACE.

DESIGN SPACES WITH  
CONTINUITY, BY GENTLY  
SCULPTING DISTINCT  
ZONES WITH A COMMON  
NARRATIVE WEAVING  
BETWEEN EACH DESIGN.



**ENGRAVE** INGRAIN 201WPCB & **ETCHING** STIPPLE 201WPCB INSTALLATION: ASHLAR





**ETCHING** SCRIBBLE 108WPCB & **ENGRAVE** STAMP 309WPCB INSTALLATION: ASHLAR



Experiment with *deliberately* contrasting colours and textures with random placements for a more spontaneous outcome.



## UNCOMPROMISED QUALITY MEETS ENVIRONMENTAL CONSCIOUSNESS

- 100% ECONYL® regenerated nylon
- Infinitely regenerable to continue creating like-new nylon
- Same performance characteristics with no degradation of durability and performance
- Bleach and fade resistance
- Inherent stain protection
- Improved texture retention and wear resistance

**ECONYL®**  
REGENERATED NYLON

ENGRAVE STENCIL 407WPCB & ENGRAVE EMOSS 510WPCB INSTALLATION: BRICK







ENGRAVE PAINT 702WPCB & OAKWOOD SMOKE 02 INSTALLATION: BRICK



Scan to learn more about the Oakwood collection of engineered timber.



Create a sophisticated perspective by pairing Mark Made with Oakwood engineered timber, for a combination that is raw, earthy and beautifully balanced.

## CARVE OUT SOME QUIET WITH COMFI BAK®

- Made from 100% PET
- Each m<sup>2</sup> contains 48 recycled PET bottles
- Reduces 30% of airborne sound and 32db of impact sound
- Stocked in Comfi Bak® for improved acoustics, insulation and comfort underfoot



ETCHING SHADING 610WPCB & OAKWOOD ESPRESSO 14 INSTALLATION: ASHLAR

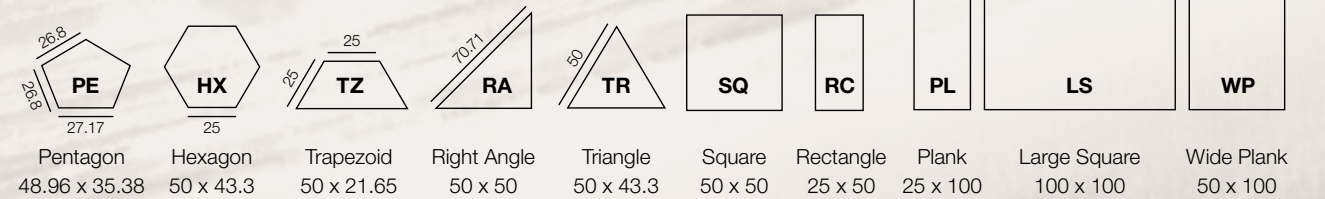




**ETCHING** GESTURE 407PL & **ETCHING** CARVE 508PL INSTALLATION: HERRINGBONE



Appreciate the flexibility of carpet tiles and create a new composition by ordering from 10 Shapes by Signature for a minimum order quantity of 100m<sup>2</sup>.



Thermo Bak™ is recommended for Shapes by Signature®.





# MAKING AN IMPACT WHILE REDUCING OUR IMPACT

## ECONYL® REGENERATED NYLON

Mark Made is constructed using 100% ECONYL® regenerated nylon. Nylon waste – otherwise polluting the Earth – is broken down and transformed into regenerated nylon. Its strength and quality remain allowing it to be recycled, recreated and remoulded again and again, without having to use new resources, making this a sustainable flooring choice.



## CARBON NEUTRAL

Signature Floors Australia is certified carbon neutral by Climate Active, the only Australian Government backed program that supports national climate policy and voluntary climate action by Australian business. We are proud to say that we have made choices and changes in the way we do business to ensure our carbon emissions are equal to net zero.



## CIRCUL8

Signature Floors' local carpet tile recycling initiative here in Australia reaffirms our ongoing commitment to closing the loop and creating a circular economy.



## CERTIFICATIONS

Mark Made is GreenTag® GreenRate Level A certified for Green Star Projects and also contributes to points in the WELL Building Standard and Living Building Challenge. We promote material transparency with Declare Labels and EPD documentation.



To find out more about our sustainability practices, visit our website.



ENGRAVE CHISEL 904WPCB & ETCHING CHALK 904WPCB INSTALLATION: BRICK

**ENGRAVE MARKING 610WPCB**



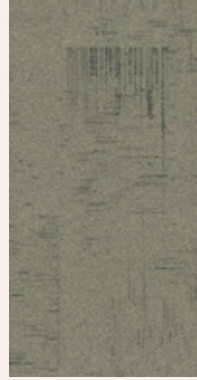
**ENGRAVE BRUSHWORK 801WPCB**



**ENGRAVE LINO CUT 802WPCB**



**ETCHING SHADING 610WPCB**



**ETCHING CANVAS 801WPCB**



**ETCHING PAPER 802WPCB**



**ENGRAVE IMPRESSION 409WPCB**



**ENGRAVE PAINT 702WPCB**



**ENGRAVE CHISEL 904WPCB**



**ETCHING HATCHING 409WPCB**



**ETCHING DRAW 702WPCB**



**ETCHING CHALK 904WPCB**



**ENGRAVE STAMP 309WPCB**



**ENGRAVE STENCIL 407WPCB**



**ENGRAVE EMBOSS 510WPCB**



**ETCHING EMBED 309WPCB**



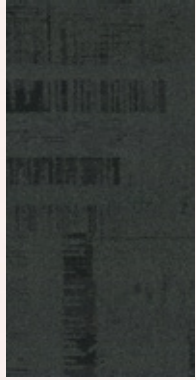
**ETCHING GESTURE 407WPCB**



**ETCHING SKETCH 510WPCB**



**ENGRAVE SCRAPE 108WPCB**



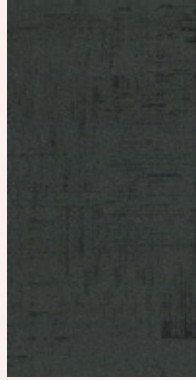
**ENGRAVE INGRAIN 201WPCB**



**ENGRAVE SCRIBE 508WPCB**



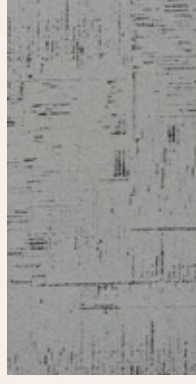
**ETCHING SCRIBBLE 108WPCB**



**ETCHING STIPPLE 201WPCB**



**ETCHING CARVE 508WPCB**



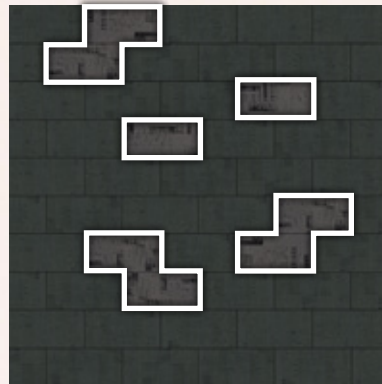
Our manufacturing process ensures no two tiles are the same. Please note that there may be batch variations from different dye lots.

HERRINGBONE – PAGE 18



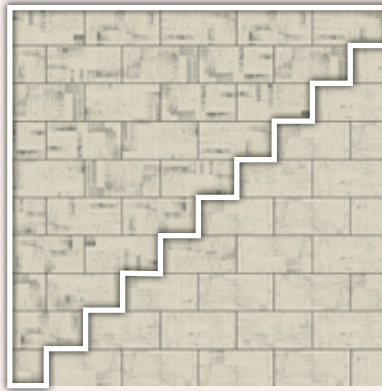
ETCHING GESTURE 407PL &  
ETCHING CARVE 508PL

ASHLAR – PAGE 10



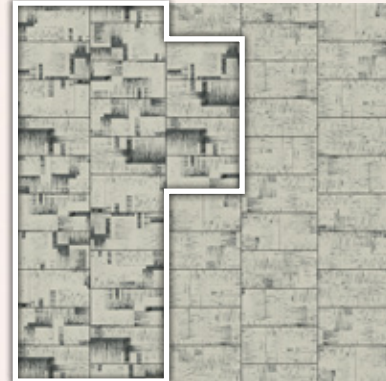
ETCHING SCRIBBLE 108WPCB &  
ENGRAVE STAMP 309WPCB

ASHLAR – PAGE 6



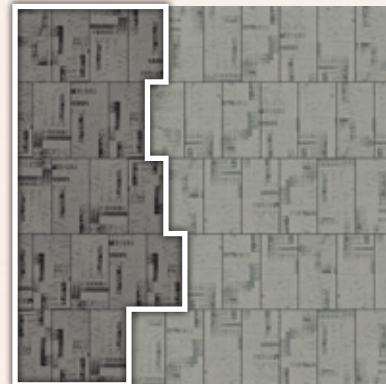
ENGRAVE LINO CUT 802WPCB &  
ETCHING PAPER 802WPCB

BRICK – PAGE 20



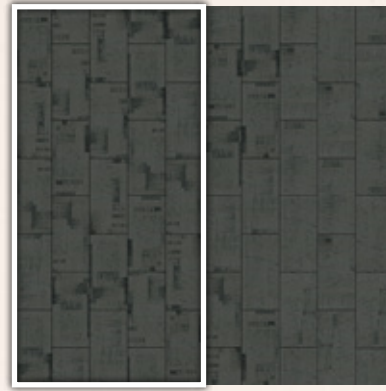
ENGRAVE CHISEL 904WPCB &  
ETCHING CHALK 904WPCB

BRICK – PAGE 13



ENGRAVE STENCIL 407WPCB &  
ENGRAVE EMOSS 510WPCB

ASHLAR – PAGE 9



ENGRAVE INGRAIN 201WPCB &  
ETCHING STIPPLE 201WPCB

au 1800 150 554  
nz 0800 150 555  
signaturefloors.com.au  
signaturefloors.co.nz



Terms & conditions: Specifications are subject to manufacturing tolerances and may be changed without prior notice. Product may vary in colour from sample and between production lots. All product purchases are subject to Signature Floorcoverings Standard Terms & Conditions of Sale. Please refer to our Technical Information Manual, Maintenance Guide & Warranty Guide for further clarification. © Signature Floors 02/2024

ETCHING PAPER 802WPCB



ENGRAVE LINO CUT 802WPCB



**Product Construction**  
**Yarn/Fibre**  
**Pile Weight**  
**Pile Height**  
**Gauge**  
**Tile Size**  
**Total Thickness**  
**Carton Size**  
**Total Weight**  
**Dimensional Stability**  
**Backing**  
**Electrostatic Propensity**  
**Fire Rating ISO 9239.1**  
**Recommended Adhesive**  
**Installation Method**  
**Availability**  
**Thermo Bak™ Option**  
**Shapes Option**  
**ACCS Rating**  
**Warranty**  
**Fire**  
**Stain/Soil**  
**Sustainability**

Engrave & Etching  
Multi-level Loop  
ECONYL® Regenerated Nylon  
949g/m² (28oz)  
5mm  
1/10  
500mm x 1000mm  
11mm  
4m²  
5.2kg/m²  
<0.15%  
Comfi Bak®  
<3.0kv  
6.2 kw/m² Critical Radiant Flux  
RLA Polymers GS300  
Directional, Ashlar, Brick  
In Stock  
100m² Minimum  
100m² Minimum  
Commercial Extra Heavy Duty  
15 Years  
Suitable All Areas  
Ultra Gard  
GreenTag® GreenRate Level A Certified  
EPDs and Declare Labels  
WELL & LBC Eligible

WITH THANKS TO OUR FURNITURE SUPPLIERS

D / I S T R / C T ownworld



